



INDUSTRIAL Belt Drive 16 & 20 AIR CURTAIN Series # IBC16 / IBC20

Durable, all welded construction with gray powder-coated aluminized steel exterior and removable lower section for simplified access to internal components.

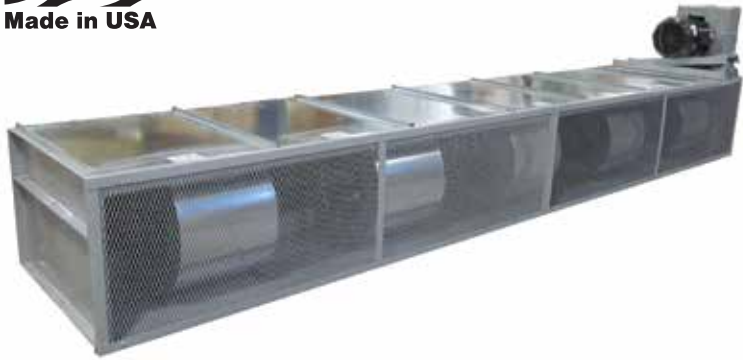


Saving Energy and Creating Healthy, Comfortable Environments

800-245-4455
www.berner.com



Made in USA



Custom Colors &
Stainless Steel Available

BERNER INDUSTRIAL Belt Drive 16 & 20

- Used to keep temperatures stable and flying insects out when the doors are open.
- Engineered to perform and built to last.
- Berner is a UL Listed panel shop.

IDEAL APPLICATIONS:

Shipping & Receiving
Train & Bus Bays

HEAT OPTIONS:

Electric
Steam
Hot Water
Indirect Gas
Direct Gas

AIR CURTAIN Series # IBC16 / IBC20

IBC16 - For mounting heights up to 16' (environmental separation) and 14' (insect control)

IBC20 - For mounting heights up to 20' (environmental separation) and 18' (insect control)

Standard Construction

- 21" high x 32 1/4" deep
- Single-speed T.E.F.C. motor — belt drive
IBC16 - 3 to 10 hp
IBC20 - 5 to 15 hp
- Split cabinet construction for fan assembly removal
- Gray powder-coated exterior
- High efficiency Pro-V Nozzle
- Top mounting only
- Optional:
2" aluminum air inlet filter (washable)
- Parts Warranty:
Ambient - Five years
Heated - Two years

Installation & Mounting

Simple to install, operate & maintain

- Single lengths up to 16'
- No Assembly Required
- 1/2" holes for top mounting

Options:

- Mounting brackets available for horizontal and vertical mounting.
- Nozzle Extensions

Control Options

- Three Phase Control Panel (required) - Built-in or Remote Mounted NEMA 4/12

Activation device (required) options:

- Plunger, roller arm, whisker arm or heavy duty door switch(es)
- On/Off switches



www.berner.com
111 Progress Avenue
New Castle, PA 16101
800-245-4455 724-658-3551

