



# INDUSTRIAL BELT DRIVE 16

## Ambient (Unheated) Air Curtain

### Data Sheet

For Door Heights To 16' (environmental separation) and 14' (insect control)

#### STANDARD CONSTRUCTION

- Single speed T.E.F.C. motor - belt drive
- Gray powder coated exterior (Optional: Custom Color or Stainless)
- Split cabinet construction for fan assembly removal
- Removable access panels
- Top Mounting only
- Front air intake (Optional: top)
- High efficiency Pro-V Nozzle
- Motor location top right (Optional: top left, front left or front right)

**5 Year  
Limited  
Warranty**



MODEL	Nozzle Width (in)	Max Vel. at Nozzle (fpm)	Avg. Outlet Vel. (fpm)	Air Volume (cfm)	Outlet Vel. Uniformity	Power Rating (kW)	Motor @ HP	Net Wt. (lbs)
IBC16-1060A	60.00	5,145	3,302	5,359	85%	2.80	1 @ 3	425
IBC16-1072A	72.00	5,005	2,944	6,256	91%	2.90	1 @ 3	471
IBC16-1084A	84.00	4,644	2,732	6,772	89%	3.00	1 @ 3	517
IBC16-1096A	96.00	5,352	3,148	8,920	87%	4.10	1 @ 5	623
IBC16-1108A	108.00	5,236	3,080	9,817	86%	4.20	1 @ 5	749
IBC16-1120A	117.00	6,012	3,627	12,526	87%	4.80	1 @ 7.5	789
IBC16-1132A	132.00	5,602	3,296	12,839	86%	4.90	1 @ 7.5	846
IBC16-1144A	144.00	5,225	3,074	13,062	85%	5.40	1 @ 7.5	892
IBC16-1156A	156.00	4,943	2,908	13,388	84%	5.50	1 @ 7.5	948
IBC16-1168A	168.00	5,203	3,061	15,176	89%	7.00	1 @ 7.5	1,059
IBC16-1180A	180.00	5,143	3,026	16,073	87%	7.10	1 @ 7.5	1,130
IBC16-1192A	192.00	5,352	3,148	17,840	87%	8.20	1 @ 10	1,201

#### NOTES:

1. Operation at 50 Hz will generate approximately a 17% reduction in air performance.
2. Performance data based on AMCA licensed data from unheated IDC16 units.
3. Vertically mounted Industrial Belt Drive air curtains not available.

See sheet EP-430 for amp draws/total load requirements.

### MODEL NUMBER CONFIGURATION

## IBC16-1 060 A D-F T-SS

Series	# of Motors	Opening Width	Heat	Voltage	Intake	Motor Location	Opt. Cabinet Finish
IBC16	1	060" - 192"	A=Ambient	D=208/3/60 E=240/3/60 H=480/3/60 I=600/3/60 T=380/3/50	T=Top F=Front	T=Top F=Front	SS=Stainless Steel CC=Custom Color

#### VELOCITY PROFILE: Model IBC16-1060A

Distance from Nozzle (ft)	3	8	13
Core Velocity (fpm)	2280	1580	1253

Sound level measured 10' (3m) from the unit in free field:  
3, 5, 7½ & 10 hp motor(s):  
68 dBA, 70 dBA, 72 dBA & 73 dBA

Berner reserves the right to alter specifications without prior notice.

**www.berner.com Berner International 800.245.4455**  
111 Progress Ave. / New Castle / PA / 16101 / USA

DS-430  
July, 2015



# INDUSTRIAL BELT DRIVE 16

## Ambient (Unheated) Air Curtain Electrical Performance Sheet

MODEL	Qty @ HP	208/3/60 (voltage code D) TOTAL MOTOR AMP DRAW			240/3/60 (voltage code E) TOTAL MOTOR AMP DRAW			480/3/60 (voltage code H) TOTAL MOTOR AMP DRAW		
		# CKTS	AMPS PER CIRCUIT	BREAKER RATING PER CIRCUIT	# CKTS	AMPS PER CIRCUIT	BREAKER RATING PER CIRCUIT	# CKTS	AMPS PER CIRCUIT	BREAKER RATING PER CIRCUIT
IBC16-1060A IBC16-1072A IBC16-1084A	1 @ 3	1	8.4	15	1	7.8	15	1	3.9	15
IBC16-1096A IBC16-1108A	1 @ 5	1	13.6	30	1	12.3	30	1	6.2	15
IBC16-1120A IBC16-1132A IBC16-1144A IBC16-1156A IBC16-1168A IBC16-1180A	1 @ 7.5	1	20.0	50	1	18.2	45	1	9.1	25
IBC16-1192A	1 @ 10	1	26.5	60	1	23.9	60	1	12.0	30

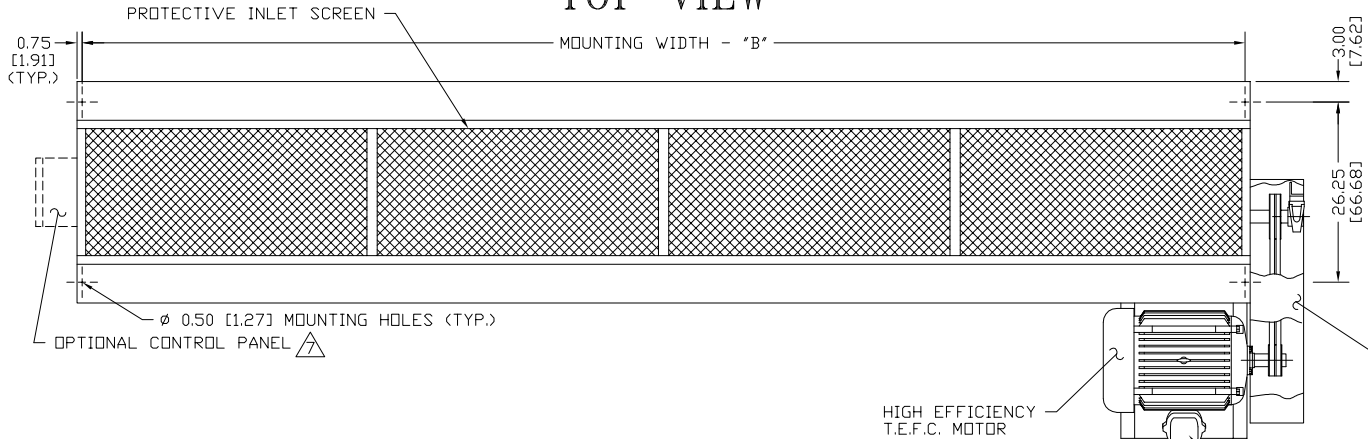
MODEL	Qty @ HP	600/3/60 (voltage code I) TOTAL MOTOR AMP DRAW			380/3/50 (voltage code T) TOTAL MOTOR AMP DRAW		
		# CKTS	AMPS PER CIRCUIT	BREAKER RATING PER CIRCUIT	# CKTS	AMPS PER CIRCUIT	BREAKER RATING PER CIRCUIT
IBC16-1060A IBC16-1072A IBC16-1084A	1 @ 3	1	3.2	15	1	3.9	15
IBC16-1096A IBC16-1108A	1 @ 5	1	5.1	15	1	6.2	15
IBC16-1120A IBC16-1132A IBC16-1144A IBC16-1156A IBC16-1168A IBC16-1180A	1 @ 7.5	1	7.2	15	1	9.1	25
IBC16-1192A	1 @ 10	1	9.6	20	1	12.0	30

Berner reserves the right to alter specifications without prior notice.

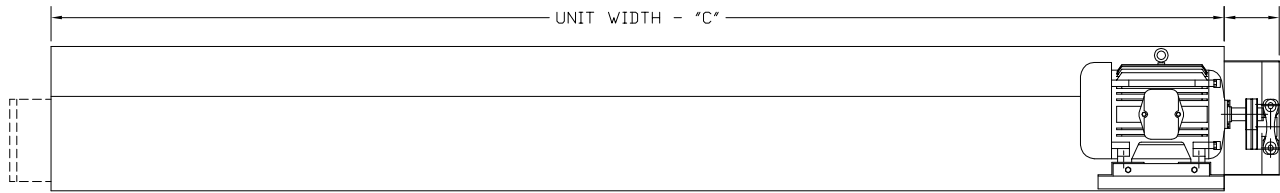
[www.berner.com](http://www.berner.com) **Berner International** 800.245-4455  
111 Progress Ave. / New Castle / PA / 16101 / USA

EP-430  
December, 2018

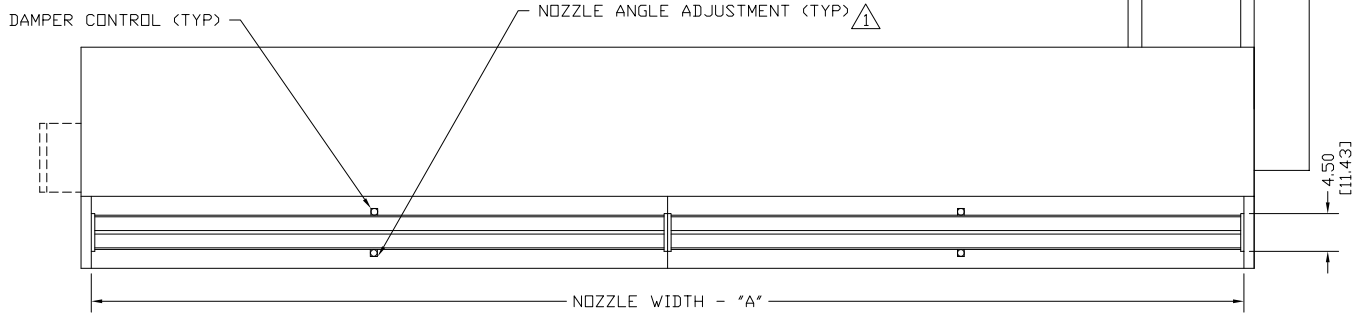
### TOP VIEW



### FRONT VIEW

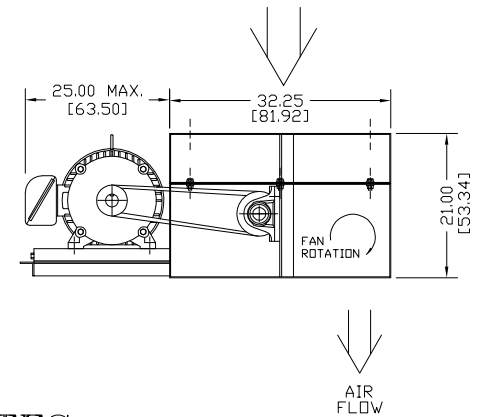


### BOTTOM VIEW



# IBC 16 AMBIENT SYSTEM TOP INTAKE

### END VIEW (BELT GUARD REMOVED) AIR FLOW



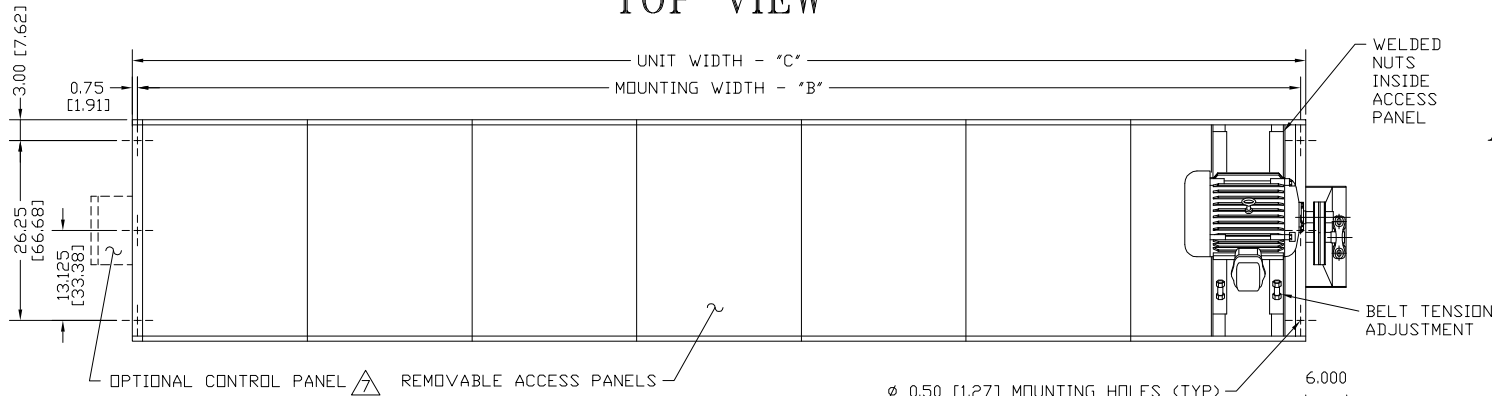
### NOTES:

- 1 AIR CURTAIN MUST BE INSTALLED SO AIR STREAM IS NOT OBSTRUCTED WHEN DEFLECTED 20° TO EITHER SIDE OF C.
- 2 ELECTRICAL CONNECTIONS TO BE FLEXIBLE.
- 3 FIELD VERIFY DIMENSIONS.
- 4 ANCHORS TO SUPPORTING STRUCTURE BY OTHERS.
- 5 ADEQUACY OF SUPPORTING STRUCTURE IS TO BE VERIFIED BY A PROFESSIONAL STRUCTURAL ENGINEER.
- 6 LETTER "A" IN MODEL NUMBER DESIGNATES, AN AMBIENT UNIT. "T" DESIGNATES TOP INTAKE, "F" IS FRONT MOTOR.
- 7 OPTIONAL CONTROL PANEL AVAILABLE: LEFT HAND MOUNT, RIGHT HAND MOUNT, OR REMOTE. PLEASE SPECIFY.
- 8 DIMENSIONS IN INCHES [CENTIMETERS].

MODEL	NOZZLE WIDTH "A"	MOUNTING WIDTH "B"	UNIT WIDTH "C"
IBC16-1060A-TF	60.00 [152.40]	61.50 [156.21]	63.00 [160.02]
IBC16-1072A-TF	72.00 [182.88]	73.50 [186.69]	75.00 [190.50]
IBC16-1084A-TF	84.00 [213.36]	85.50 [217.17]	87.00 [220.98]
IBC16-1096A-TF	96.00 [243.84]	97.50 [247.65]	99.00 [251.46]
IBC16-1108A-TF	108.00 [274.32]	109.50 [278.13]	111.00 [281.94]
IBC16-1120A-TF	117.00 [297.18]	118.50 [300.99]	120.00 [304.80]
IBC16-1132A-TF	132.00 [335.28]	133.50 [339.09]	135.00 [342.90]
IBC16-1144A-TF	144.00 [365.76]	145.50 [369.57]	147.00 [373.38]
IBC16-1156A-TF	156.00 [396.24]	157.50 [400.05]	159.00 [403.86]
IBC16-1168A-TF	168.00 [426.72]	169.50 [430.53]	171.00 [434.34]
IBC16-1180A-TF	180.00 [457.20]	181.50 [461.01]	183.00 [464.82]
IBC16-1192A-TF	192.00 [487.68]	193.50 [491.49]	195.00 [495.30]

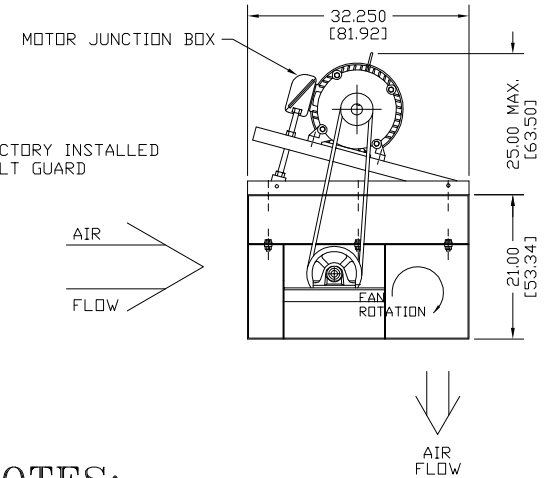
PROJECT		
LOCATION		
ARCHITECT		
ENGINEER		REV.
DWG. NO.	IBC16-AMBI	TITLE: <b>BERNER</b>
DATE	10JUNE14	MODEL IBC16 AIR CURTAIN
BY	S. Beil	TOP INTAKE AMBIENT SYSTEM
REPLACES	-	
BY	-	BERNER INTERNATIONAL CORP. NEW CASTLE, PA.

### TOP VIEW

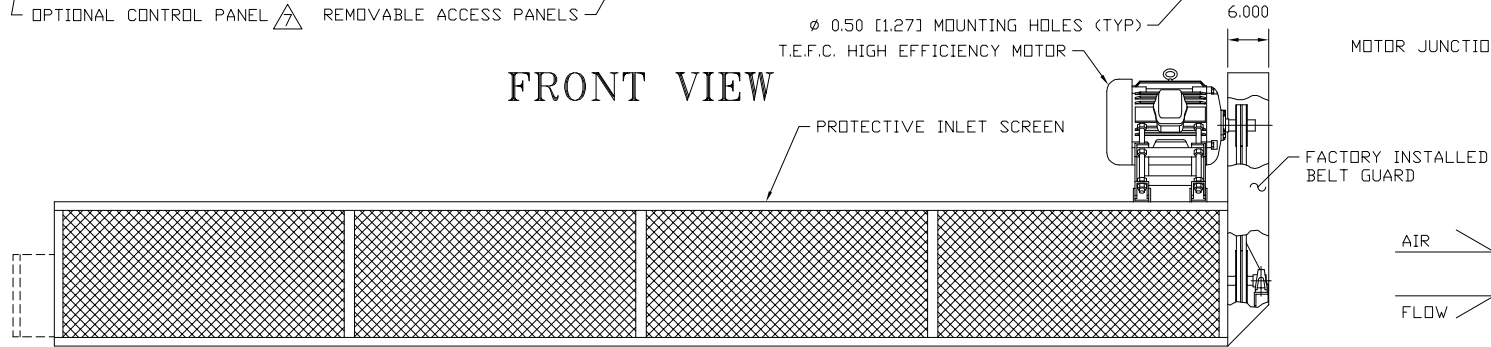


# IBC 16 AMBIENT SYSTEM FRONT INTAKE

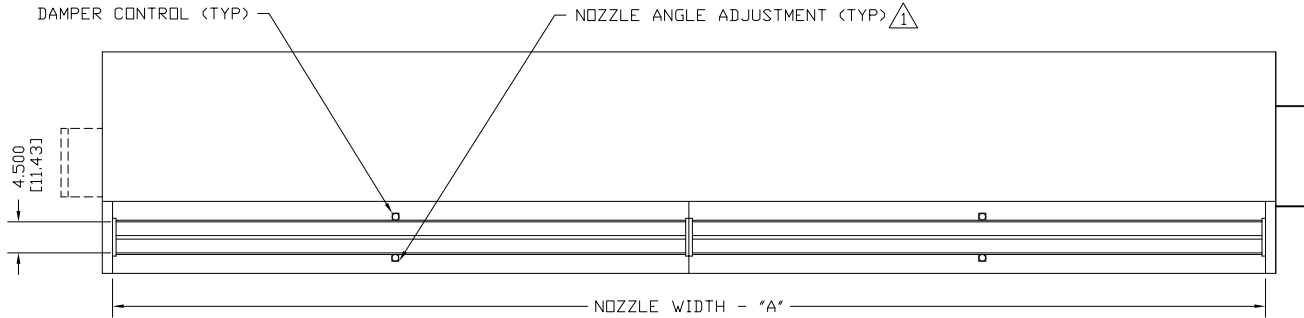
### END VIEW (BELT GUARD REMOVED)



### FRONT VIEW



### BOTTOM VIEW



### NOTES:

- 1. AIR CURTAIN MUST BE INSTALLED SO AIR STREAM IS NOT OBSTRUCTED WHEN DEFLECTED 20° TO EITHER SIDE OF C.
- 2. ELECTRICAL CONNECTIONS TO BE FLEXIBLE.
- 3. FIELD VERIFY DIMENSIONS.
- 4. ANCHORS TO SUPPORTING STRUCTURE BY OTHERS.
- 5. ADEQUACY OF SUPPORTING STRUCTURE IS TO BE VERIFIED BY A PROFESSIONAL STRUCTURAL ENGINEER.
- 6. LETTER 'A' IN MODEL NUMBER DESIGNATES, AN AMBIENT UNIT. 'F' DESIGNATES FRONT INTAKE, 'T' IS TOP MOTOR.
- 7. OPTIONAL CONTROL PANEL AVAILABLE: LEFT HAND MOUNT, RIGHT HAND MOUNT, OR REMOTE. PLEASE SPECIFY.
- 8. DIMENSIONS IN INCHES [CENTIMETERS].

MODEL	NOZZLE WIDTH "A"	MOUNTING WIDTH "B"	UNIT WIDTH "C"
IBC16-1060A-FT	60.00 [152.40]	61.50 [156.21]	63.00 [160.02]
IBC16-1072A-FT	72.00 [182.88]	73.50 [186.69]	75.00 [190.50]
IBC16-1084A-FT	84.00 [213.36]	85.50 [217.17]	87.00 [220.98]
IBC16-1096A-FT	96.00 [243.84]	97.50 [247.65]	99.00 [251.46]
IBC16-1108A-FT	108.00 [274.32]	109.50 [278.13]	111.00 [281.94]
IBC16-1120A-FT	117.00 [297.18]	118.50 [300.99]	120.00 [304.80]
IBC16-1132A-FT	132.00 [335.28]	133.50 [339.09]	135.00 [342.90]
IBC16-1144A-FT	144.00 [365.76]	145.50 [369.57]	147.00 [373.38]
IBC16-1156A-FT	156.00 [396.24]	157.50 [400.05]	159.00 [403.86]
IBC16-1168A-FT	168.00 [426.72]	169.50 [430.53]	171.00 [434.34]
IBC16-1180A-FT	180.00 [457.20]	181.50 [461.01]	183.00 [464.82]
IBC16-1192A-FT	192.00 [487.68]	193.50 [491.49]	195.00 [495.30]

PROJECT		TITLE: <b>BERNER</b>
LOCATION		MODEL IBC16 AIR CURTAIN
ARCHITECT		FRONT INTAKE AMBIENT SYSTEM
ENGINEER		
DWG. NO.	IBC16-AMB2	
DATE	10JUNE14	
BY	S. Beil	
REPLACES	-	
BY	-	BERNER INTERNATIONAL CORP. NEW CASTLE, PA.