



INDUSTRIAL BELT DRIVE 20

Steam Heated Air Curtain

Data Sheet

For Mounting Heights To 20' (environmental separation)

STANDARD CONSTRUCTION

- Single speed T.E.F.C. motor - belt drive
- Gray powder coated exterior (Optional: Custom Color or Stainless)
- Split cabinet construction for fan assembly removal
- Removable access panels
- Top Mounting only
- Front air intake (Optional: top)
- Motor location top right (Optional: top left, front left or front right)

Coil Features:

- Galvanized steel casing
- 5/8" copper tube with .035" wall
- Aluminum fins
- Leak tested at 450 psi

**2 Year
Limited
Warranty**



| MODEL | Nozzle Width (in) | Max Vel. at Nozzle (fpm) | Avg. Outlet Vel. (fpm) | Air Volume (cfm) | Outlet Vel. Uniformity | Power Rating (kW) | Motor @ HP | Coil Output (MBH) | Inlet Pressure (PSIG) | Condensate (lbs/hr) | Air Temp. Rise (°F) | Net Wt. (lbs) |
|-------------|-------------------|--------------------------|------------------------|------------------|------------------------|-------------------|------------|-------------------|-----------------------|---------------------|---------------------|---------------|
| IBC20-1060S | 60.00 | 6,580 | 3,870 | 6,854 | 89% | 4.70 | 1 @ 5 | 279.4 | 5 | 288.0 | 38° | 519 |
| IBC20-1072S | 72.00 | 6,549 | 3,852 | 8,186 | 89% | 4.90 | 1 @ 5 | 334.5 | 5 | 344.8 | 38° | 579 |
| IBC20-1084S | 84.00 | 6,076 | 3,574 | 8,861 | 87% | 4.90 | 1 @ 5 | 376.0 | 5 | 387.6 | 39° | 639 |
| IBC20-1096S | 96.00 | 6,900 | 4,059 | 11,500 | 92% | 6.80 | 1 @ 7½ | 457.6 | 5 | 471.7 | 37° | 774 |
| IBC20-1108S | 108.00 | 6,747 | 3,969 | 12,650 | 90% | 6.90 | 1 @ 7½ | 509.2 | 5 | 524.8 | 37° | 870 |
| IBC20-1120S | 117.00 | 7,494 | 4,523 | 15,612 | 88% | 8.70 | 1 @ 10 | 587.3 | 5 | 605.4 | 35° | 951 |
| IBC20-1132S | 132.00 | 7,017 | 4,127 | 16,080 | 87% | 8.90 | 1 @ 10 | 634.4 | 5 | 653.8 | 36° | 1,017 |
| IBC20-1144S | 144.00 | 7,640 | 4,381 | 19,100 | 87% | 11.70 | 1 @ 15 | 720.8 | 5 | 742.9 | 35° | 1,072 |
| IBC20-1156S | 156.00 | 7,405 | 4,356 | 20,055 | 86% | 11.90 | 1 @ 15 | 769.4 | 5 | 793.0 | 35° | 1,192 |
| IBC20-1168S | 168.00 | 7,783 | 4,323 | 22,700 | 90% | 12.80 | 1 @ 15 | 848.3 | 5 | 874.4 | 34° | 1,292 |
| IBC20-1180S | 180.00 | 7,300 | 4,294 | 22,814 | 91% | 12.90 | 1 @ 15 | 881.7 | 5 | 908.8 | 36° | 1,355 |
| IBC20-1192S | 192.00 | 6,900 | 4,059 | 23,000 | 92% | 13.60 | 1 @ 15 | 915.2 | 5 | 943.3 | 37° | 1,490 |

NOTES:

1. Operation at 50 Hz will generate approximately a 17% reduction in performance.
2. Performance data based on AMCA licensed data from unheated IDC20 units.
3. Coil performance based on 65°F entering air temperature.
4. Standard connection same end supply/return (Optional: opposite end supply/return).
5. Coil should be field supplied with a solenoid valve that energizes only when air curtain is energized. Consideration must be taken for freeze protection when necessary.
6. Maximum leaving air temperature shall not exceed 120°F.
7. Consult factory for alternate steam pressures or opposite end supply/return connections performance data.
8. Vertically mounted Industrial Belt Drive air curtains not available.

See sheet EP-454 for amp draws/total load requirements.

MODEL NUMBER CONFIGURATION

IBC20-1 060 S D-F T-SS

| Series | # of Motors | Opening Width | Heat | Voltage | Intake | Motor Location | Opt. Cabinet Finish |
|--------|-------------|---------------|----------------|--------------------------------------------------------------------|------------------|------------------|---------------------------------------|
| IBC20 | 1 | 060" - 192" | S=Steam Heated | D=208/3/60 E=240/3/60 H=480/3/60 I=600/3/60 T=380/3/50 | T=Top F=Front | T=Top F=Front | SS=Stainless Steel CC=Custom Color |

Sound level measured 10' (3m) from the unit in free field:
5, 7½, 10 & 15 hp motor(s):
73 dBA, 75 dBA, 76 dBA & 78 dBA

Berner reserves the right to alter specifications without prior notice.

www.berner.com Berner International 800.245.4455
111 Progress Ave. / New Castle / PA / 16101 / USA

DS-454
April, 2022



INDUSTRIAL BELT DRIVE 20

Steam Heated Air Curtain

Electrical Performance Sheet

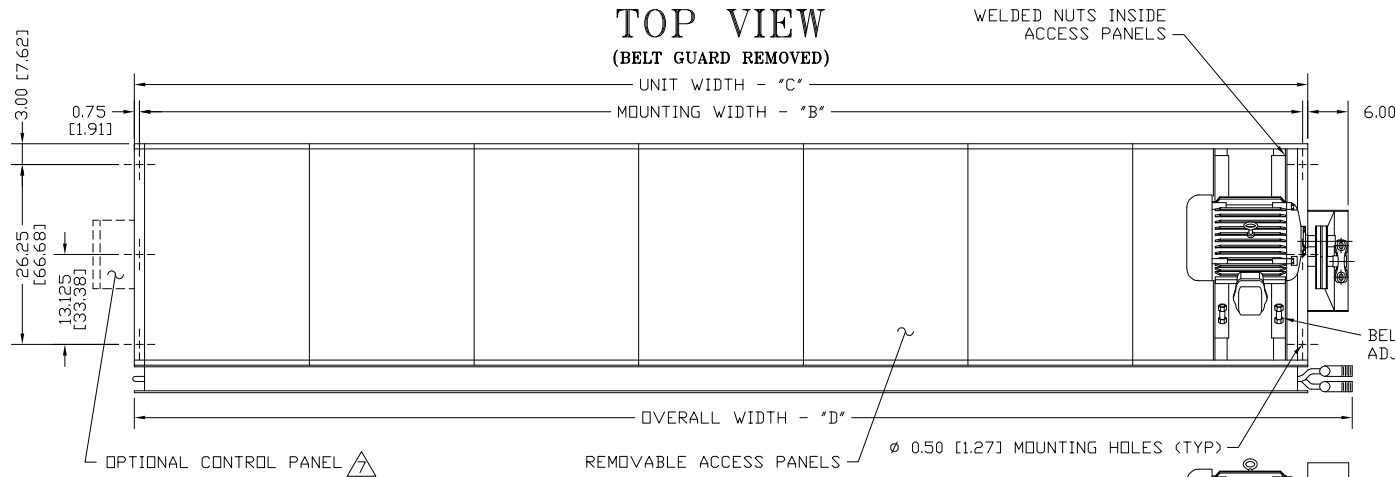
| | | 208/3/60 (voltage code D) TOTAL MOTOR AMP DRAW | | | 240/3/60 (voltage code E) TOTAL MOTOR AMP DRAW | | | 480/3/60 (voltage code H) TOTAL MOTOR AMP DRAW | | |
|-------------------------------------------------------------------------|----------|---------------------------------------------------|------------------|----------------------------|---------------------------------------------------|------------------|----------------------------|---------------------------------------------------|------------------|----------------------------|
| MODEL | Qty @ HP | # CKTS | AMPS PER CIRCUIT | BREAKER RATING PER CIRCUIT | # CKTS | AMPS PER CIRCUIT | BREAKER RATING PER CIRCUIT | # CKTS | AMPS PER CIRCUIT | BREAKER RATING PER CIRCUIT |
| IBC20-1060S IBC20-1072S IBC20-1084S | 1 @ 5 | 1 | 13.6 | 30 | 1 | 12.3 | 30 | 1 | 6.2 | 15 |
| IBC20-1096S IBC20-1108S | 1 @ 7.5 | 1 | 20.0 | 50 | 1 | 18.2 | 45 | 1 | 9.1 | 25 |
| IBC20-1120S IBC20-1132S | 1 @ 10 | 1 | 26.5 | 60 | 1 | 23.9 | 60 | 1 | 12.0 | 30 |
| IBC20-1144S IBC20-1156S IBC20-1168S IBC20-1180S IBC20-1192S | 1 @ 15 | 1 | 40.0 | 100 | 1 | 37.0 | 100 | 1 | 18.4 | 45 |

| | | 600/3/60 (voltage code I) TOTAL MOTOR AMP DRAW | | | 380/3/50 (voltage code T) TOTAL MOTOR AMP DRAW | | |
|-------------------------------------------------------------------------|----------|---------------------------------------------------|------------------|----------------------------|---------------------------------------------------|------------------|----------------------------|
| MODEL | Qty @ HP | # CKTS | AMPS PER CIRCUIT | BREAKER RATING PER CIRCUIT | # CKTS | AMPS PER CIRCUIT | BREAKER RATING PER CIRCUIT |
| IBC20-1060S IBC20-1072S IBC20-1084S | 1 @ 5 | 1 | 5.1 | 15 | 1 | 6.2 | 15 |
| IBC20-1096S IBC20-1108S | 1 @ 7.5 | 1 | 7.2 | 15 | 1 | 9.1 | 25 |
| IBC20-1120S IBC20-1132S | 1 @ 10 | 1 | 9.6 | 20 | 1 | 12.0 | 30 |
| IBC20-1144S IBC20-1156S IBC20-1168S IBC20-1180S IBC20-1192S | 1 @ 15 | 1 | 14.6 | 30 | 1 | 18.4 | 45 |

Berner reserves the right to alter specifications without prior notice.

www.berner.com Berner International 800.245-4455
111 Progress Ave. / New Castle / PA / 16101 / USA

EP-454
December, 2018

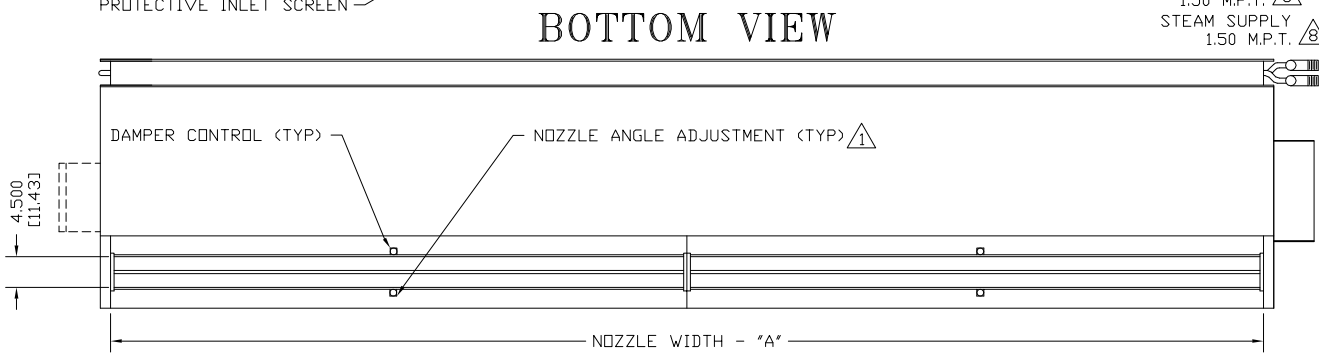
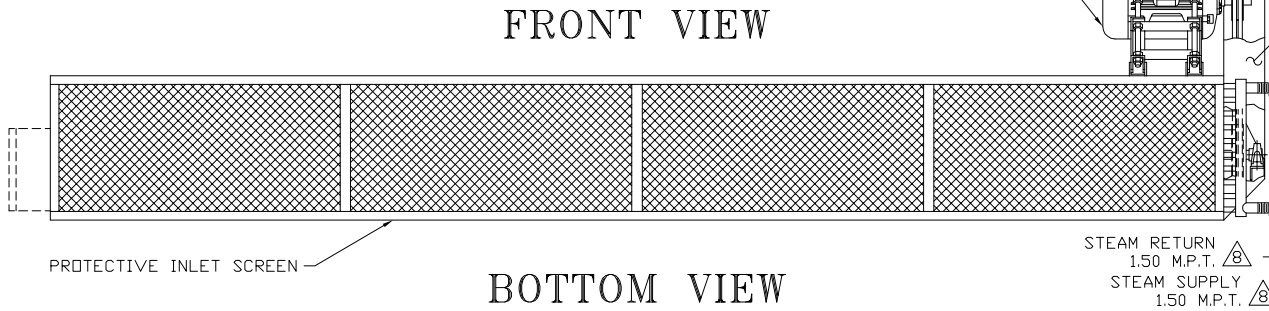
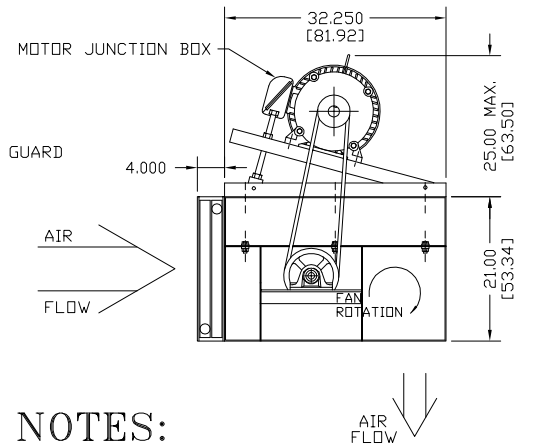


IBC20

STEAM HEATED FRONT INTAKE

SAME END SUP./RET.

END VIEW (BELT GUARD REMOVED)



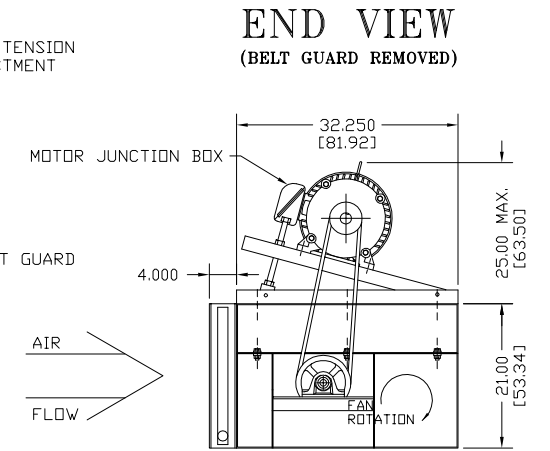
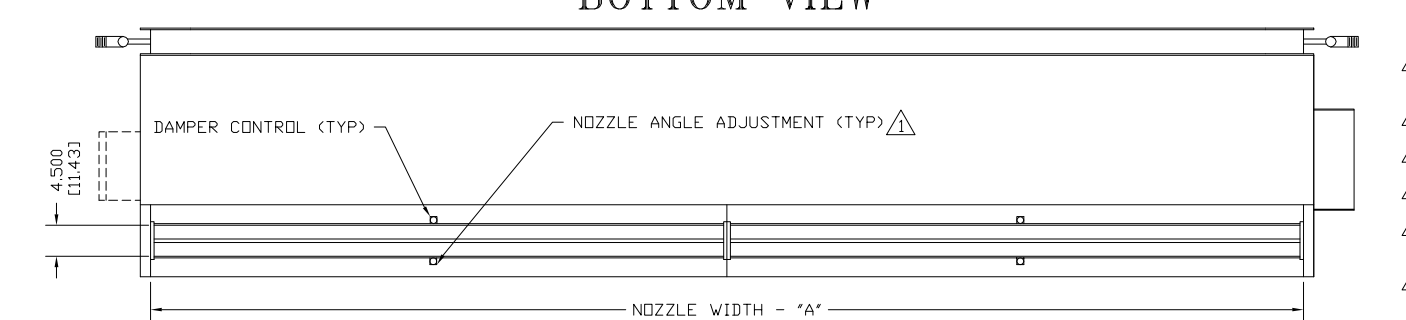
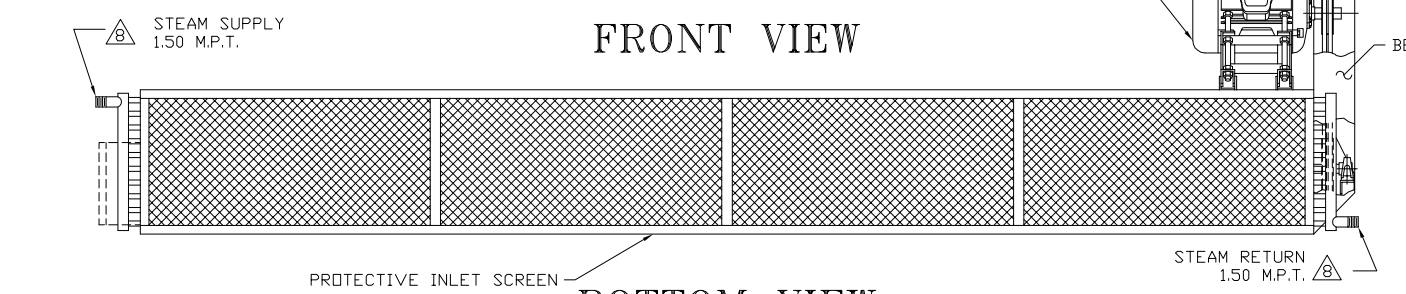
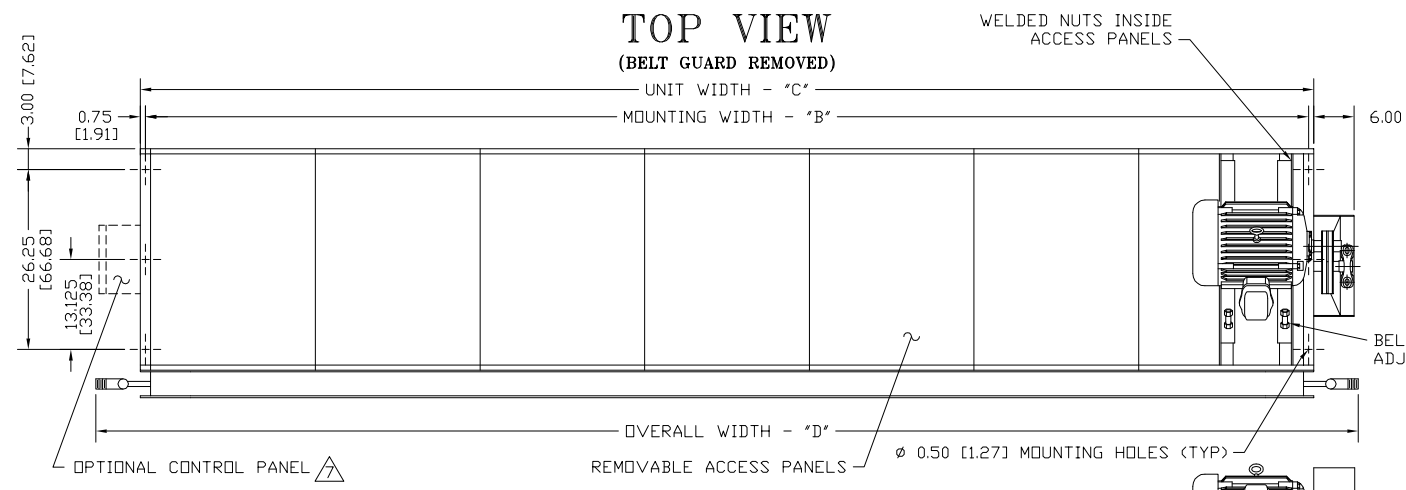
NOTES:

- 1 AIR CURTAIN MUST BE INSTALLED SO AIR STREAM IS NOT OBSTRUCTED WHEN DEFLECTED 20° TO EITHER SIDE OF C.
- 2 ELECTRICAL CONNECTIONS TO BE FLEXIBLE.
- 3 FIELD VERIFY DIMENSIONS.
- 4 ANCHORS TO SUPPORTING STRUCTURE BY OTHERS.
- 5 ADEQUACY OF SUPPORTING STRUCTURE IS TO BE VERIFIED BY A PROFESSIONAL STRUCTURAL ENGINEER.
- 6 LETTER "S" IN MODEL NUMBER DESIGNATES, STEAM UNIT. "F" DESIGNATES FRONT INTAKE, "T" IS TOP MOTOR.
- 7 OPTIONAL CONTROL PANEL AVAILABLE: LEFT HAND MOUNT, RIGHT HAND MOUNT, OR REMOTE. PLEASE SPECIFY.
- 8 COIL CONNECTIONS AS SHOWN, OPPOSITE AND SAME END CONNECTIONS AVAILABLE. PLEASE SPECIFY.
- 9 DIMENSIONS IN INCHES [CENTIMETERS].

| MODEL | NOZZLE WIDTH "A" | MOUNTING WIDTH "B" | UNIT WIDTH "C" | OVERALL WIDTH "D" |
|----------------|------------------|--------------------|-----------------|-------------------|
| IBC20-1060S-FT | 60.00 [152.40] | 61.50 [156.21] | 63.00 [160.02] | 69.50 [176.53] |
| IBC20-1072S-FT | 72.00 [182.88] | 73.50 [186.69] | 75.00 [190.50] | 81.50 [207.01] |
| IBC20-1084S-FT | 84.00 [213.36] | 85.50 [217.17] | 87.00 [220.98] | 93.50 [237.49] |
| IBC20-1096S-FT | 96.00 [243.84] | 97.50 [247.65] | 99.00 [251.46] | 105.50 [267.97] |
| IBC20-1108S-FT | 108.00 [274.32] | 109.50 [278.13] | 111.00 [281.94] | 117.50 [298.45] |
| IBC20-1120S-FT | 117.00 [297.18] | 118.50 [300.99] | 120.00 [304.80] | 126.50 [321.31] |
| IBC20-1132S-FT | 132.00 [335.28] | 133.50 [339.09] | 135.00 [342.90] | 141.50 [359.41] |
| IBC20-1144S-FT | 144.00 [365.76] | 145.50 [369.57] | 147.00 [373.38] | 153.50 [389.89] |
| IBC20-1156S-FT | 156.00 [396.24] | 157.50 [400.05] | 159.00 [403.86] | 165.50 [420.37] |
| IBC20-1168S-FT | 168.00 [426.72] | 169.50 [430.53] | 171.00 [434.34] | 177.50 [450.85] |
| IBC20-1180S-FT | 180.00 [457.20] | 181.50 [461.01] | 183.00 [464.82] | 189.50 [481.33] |
| IBC20-1192S-FT | 192.00 [487.68] | 193.50 [491.49] | 195.00 [495.30] | 201.50 [511.81] |

| | | |
|-----------|------------|-----------------------------------------------|
| PROJECT | | |
| LOCATION | | |
| ARCHITECT | | |
| ENGINEER | | |
| DWG. NO. | IBC20-STM1 | TITLE: BERNER |
| DATE | 11JUNE14 | MODEL IBC20 AIR CURTAIN |
| BY | S. Beil | FRONT INTAKE - STEAM HEATED SYSTEM |
| REPLACES | - | |
| BY | - | BERNER INTERNATIONAL CORP. NEW CASTLE, PA. |

IBC20 STEAM HEATED FRONT INTAKE OPP. END SUP./RET.



NOTES:

- 1 AIR CURTAIN MUST BE INSTALLED SO AIR STREAM IS NOT OBSTRUCTED WHEN DEFLECTED 20° TO EITHER SIDE OF C.
- 2 ELECTRICAL CONNECTIONS TO BE FLEXIBLE.
- 3 FIELD VERIFY DIMENSIONS.
- 4 ANCHORS TO SUPPORTING STRUCTURE BY OTHERS.
- 5 ADEQUACY OF SUPPORTING STRUCTURE IS TO BE VERIFIED BY A PROFESSIONAL STRUCTURAL ENGINEER.
- 6 LETTER "S" IN MODEL NUMBER DESIGNATES, STEAM UNIT. "F" DESIGNATES FRONT INTAKE, "T" IS TOP MOTOR.
- 7 OPTIONAL CONTROL PANEL AVAILABLE: LEFT HAND MOUNT, RIGHT HAND MOUNT, OR REMOTE. PLEASE SPECIFY.
- 8 COIL CONNECTIONS AS SHOWN, OPPOSITE AND SAME END CONNECTIONS AVAILABLE, PLEASE SPECIFY.
- 9 DIMENSIONS IN INCHES [CENTIMETERS].

| MODEL | NOZZLE WIDTH "A" | MOUNTING WIDTH "B" | UNIT WIDTH "C" | OVERALL WIDTH "D" |
|----------------|------------------|--------------------|-----------------|-------------------|
| IBC20-1060S-FT | 60.00 [152.40] | 61.50 [156.21] | 63.00 [160.02] | 76.00 [193.04] |
| IBC20-1072S-FT | 72.00 [182.88] | 73.50 [186.69] | 75.00 [190.50] | 88.00 [223.52] |
| IBC20-1084S-FT | 84.00 [213.36] | 85.50 [217.17] | 87.00 [220.98] | 100.00 [254.00] |
| IBC20-1096S-FT | 96.00 [243.84] | 97.50 [247.65] | 99.00 [251.46] | 112.00 [284.48] |
| IBC20-1108S-FT | 108.00 [274.32] | 109.50 [278.13] | 111.00 [281.94] | 124.00 [314.96] |
| IBC20-1120S-FT | 117.00 [297.18] | 118.50 [300.99] | 120.00 [304.80] | 133.00 [337.82] |
| IBC20-1132S-FT | 132.00 [335.28] | 133.50 [339.09] | 135.00 [342.90] | 148.00 [375.92] |
| IBC20-1144S-FT | 144.00 [365.76] | 145.50 [369.57] | 147.00 [373.38] | 160.00 [406.40] |
| IBC20-1156S-FT | 156.00 [396.24] | 157.50 [400.05] | 159.00 [403.86] | 172.00 [436.88] |
| IBC20-1168S-FT | 168.00 [426.72] | 169.50 [430.53] | 171.00 [434.34] | 184.00 [467.36] |
| IBC20-1180S-FT | 180.00 [457.20] | 181.50 [461.01] | 183.00 [464.82] | 196.00 [497.84] |
| IBC20-1192S-FT | 192.00 [487.68] | 193.50 [491.49] | 195.00 [495.30] | 208.00 [528.32] |

| | | |
|-----------|------------|-----------------------------------------------|
| PROJECT | | TITLE: BERNER |
| LOCATION | | MODEL IBC20 AIR CURTAIN |
| ARCHITECT | | FRONT INTAKE - STEAM HEATED SYSTEM |
| ENGINEER | | |
| DWG. NO. | IBC20-STM2 | |
| DATE | 11JUNE14 | |
| BY | S. Beil | |
| REPLACES | - | |
| BY | - | BERNER INTERNATIONAL CORP. NEW CASTLE, PA. |