



INDUSTRIAL DIRECT DRIVE 20

Positive Indirect Gas Heated Air Curtain

Data Sheet

For Door Heights To 20' (environmental separation)

STANDARD CONSTRUCTION

- Single speed T.E.A.O. motor(s) - direct drive
- Gray powder coated exterior (Optional: Custom Color or Stainless)
- Split cabinet construction for fan assembly removal
- Top Mounting only
- Front air intake only
- High efficiency Pro-V Nozzle

- Factory mounted duct transition with bottom access panels
- Field installed cETLus & AHRI Certified indirect gas heater(s):
 - Aluminized steel heat exchanger (Optional: Stainless)
 - Steel cabinet with beige finish
 - Spark ignited pilot
 - Power venter
 - Separate 120V power supply required (Optional: transformer for single point connection)

**2 Year
Limited
Warranty**



MODEL	Nozzle Width (in)	Max Vel. at Nozzle (fpm)	Avg. Outlet Vel. (fpm)	Air Volume (cfm)	Outlet Vel. Uniformity	Power Rating (kW)	Motor(s) @ hp	Heater(s) @ Input (MBH)	Total Heater Output (MBH)	Air Temp. Rise (°F)	Net Wt. Air Curtain (lbs)	Net Wt. Duct Trans. (lbs)	Net Wt. Heater (lbs)
IDC20-1060G	60.00	6,580	3,870	6,854	89%	4.70	1 @ 5	1 @ 350.0	290.5	39°	390	118	325
IDC20-1072G	72.00	6,549	3,852	8,186	89%	4.90	1 @ 5	1 @ 350.0	290.5	33°	435	133	325
IDC20-1084G	84.00	6,076	3,574	8,861	87%	4.90	1 @ 5	1 @ 350.0	290.5	30°	480	148	325
IDC20-1096G	96.00	6,900	4,059	11,500	92%	6.80	1 @ 7½	2 @ 250.0	415.0	33°	600	156	2 @ 214
IDC20-1108G	108.00	6,747	3,969	12,650	90%	6.90	1 @ 7½	2 @ 250.0	415.0	30°	680	171	2 @ 214
IDC20-1120G	117.00	7,494	4,523	15,612	88%	8.70	1 @ 10	2 @ 350.0	581.0	34°	750	237	2 @ 325
IDC20-1132G	132.00	7,017	4,127	16,080	87%	8.90	1 @ 10	2 @ 350.0	581.0	33°	795	256	2 @ 325
IDC20-1144G	144.00	7,640	4,381	19,100	87%	11.70	1 @ 15	2 @ 400.0	664.0	32°	835	271	2 @ 339
IDC20-1156G	156.00	7,405	4,356	20,055	86%	11.90	1 @ 15	2 @ 400.0	664.0	31°	940	286	2 @ 339
IDC20-1168G	168.00	7,783	4,323	22,700	90%	12.80	1 @ 15	3 @ 350.0	871.5	35°	1,025	309	3 @ 325
IDC20-1180G	180.00	7,300	4,294	22,814	91%	12.90	1 @ 15	3 @ 350.0	871.5	35°	1,070	324	3 @ 325
IDC20-2192G	192.00	6,900	4,059	23,000	92%	13.60	2 @ 7½	3 @ 350.0	871.5	35°	1,190	339	3 @ 325

NOTES:

1. Operation at 50 Hz will generate approximately a 17% reduction in performance. Consult factory for gas heater sizing.
2. Performance data based on AMCA licensed data from unheated units.
3. Gas supply pressure for each heater: (Min 0.18 psi or 5 inch wc) to (Max 0.50 psi or 14 inch wc).
4. Maximum leaving air temperature shall not exceed 120°F.
5. CAUTION: Indirect Gas Heaters are not intended for use in high humidity applications.
6. Gas heater(s) shall not be directly connected to transition, min of 2" gap, and requires individual support.
7. Duct transition is factory mounted to air curtain and requires individual support.
8. Heaters are "Separated Combustion" ready for two-pipe venting. If venting concentrically, Combustion Air Inlet kit required.
9. Vertically mounted indirect gas heated air curtain not available.

See sheet EP-448 for amp draws/total load requirements.

MODEL NUMBER CONFIGURATION

IDC20-1 060 G D-F SS

Series	# of Motors	Opening Width	Heat	Voltage	Intake	Opt. Cabinet Finish
IDC20	1, 2	060" - 192"	G=Indirect Gas Heated	D=208/3/60 E=240/3/60 H=480/3/60 I=600/3/60 T=380/3/50	F=Front	SS=Stainless Steel CC=Custom Color

Sound level measured 10' (3m) from the unit in free field:
3, 5, 7½, (5 + 3) & (5 + 5) hp motor(s):
68 dBA, 70 dBA, 71 dBA, 72 dBA & 73 dBA

Berner reserves the right to alter specifications without prior notice.



INDUSTRIAL DIRECT DRIVE 20

**Positive Indirect Gas Heated Air Curtain
Electrical Performance Sheet**

208/3/60 (voltage code D)												
TOTAL MOTOR AMP DRAW												
MODEL	HEATER MBH	Temp Rise °F	Qty @ HP	# CKTS	MULTIPLE CKT - MOTOR PANEL & HEATER				SINGLE CKT - MOTOR PANEL & XFMR FOR HEATER			
					AMPS PER CIRCUIT		BREAKER RATING PER CIRCUIT		# CKTS	XFMR KVA	AMPS PER CIRCUIT (including XFMR)	BREAKER RATING PER CIRCUIT
					MOTOR 208V CKT	HEATER 120V CKT	MOTOR 208V CKT	HEATER 120V CKT				
IDC20-1060G	1 @ 350	39	1 @ 5	2	17.0	13.8	35	20	1	2	26.6	35
IDC20-1072G	1 @ 350	33	1 @ 5	2	17.0	13.8	35	20	1	2	26.6	35
IDC20-1084G	1 @ 350	30	1 @ 5	2	17.0	13.8	35	20	1	2	26.6	35
IDC20-1096G	2 @ 250	33	1 @ 7.5	3	23.0	8.0/8.0	50	15/15	1	2	32.6	50
IDC20-1108G	2 @ 250	30	1 @ 7.5	3	23.0	8.0/8.0	50	15/15	1	2	32.6	50
IDC20-1120G	2 @ 350	34	1 @ 10	3	31.5	13.8/13.8	60	20/20	1	5	55.5	70
IDC20-1132G	2 @ 350	33	1 @ 10	3	31.5	13.8/13.8	60	20/20	1	5	55.5	70
IDC20-1144G	2 @ 400	32	1 @ 15	3	46.0	13.8/13.8	100	20/20	1	5	70.0	100
IDC20-1156G	2 @ 400	31	1 @ 15	3	46.0	13.8/13.8	100	20/20	1	5	70.0	100
IDC20-1168G	3 @ 350	35	1 @ 15	4	46.0	13.8/13.8/13.8	100	20/20/20	1	7.5	82.1	125
IDC20-1180G	3 @ 350	35	1 @ 15	4	46.0	13.8/13.8/13.8	100	20/20/20	1	7.5	82.1	125
IDC20-2192G	3 @ 350	35	2 @ 7.5	4	46.0	13.8/13.8/13.8	100	20/20/20	1	7.5	82.1	125

Berner reserves the right to alter specifications without prior notice.



INDUSTRIAL DIRECT DRIVE 20

Positive Indirect Gas Heated Air Curtain
Electrical Performance Sheet

240/3/60 (voltage code E)												
TOTAL MOTOR AMP DRAW												
MODEL	HEATER MBH	Temp Rise °F	Qty @ HP	# CKTS	MULTIPLE CKT - MOTOR PANEL & HEATER				SINGLE CKT - MOTOR PANEL & XFMR FOR HEATER			
					AMPS PER CIRCUIT		BREAKER RATING PER CIRCUIT		# CKTS	XFMR KVA	AMPS PER CIRCUIT (including XFMR)	BREAKER RATING PER CIRCUIT
					MOTOR 240V CKT	HEATER 120V CKT	MOTOR 240V CKT	HEATER 120V CKT				
IDC20-1060G	1 @ 350	39	1 @ 5	2	15.8	13.8	35	20	1	2	24.1	35
IDC20-1072G	1 @ 350	33	1 @ 5	2	15.8	13.8	35	20	1	2	24.1	35
IDC20-1084G	1 @ 350	30	1 @ 5	2	15.8	13.8	35	20	1	2	24.1	35
IDC20-1096G	2 @ 250	33	1 @ 7.5	3	22.0	8.0/8.0	45	15/15	1	2	30.3	45
IDC20-1108G	2 @ 250	30	1 @ 7.5	3	22.0	8.0/8.0	45	15/15	1	2	30.3	45
IDC20-1120G	2 @ 350	34	1 @ 10	3	30.6	13.8/13.8	60	20/20	1	5	51.4	70
IDC20-1132G	2 @ 350	33	1 @ 10	3	30.6	13.8/13.8	60	20/20	1	5	51.4	70
IDC20-1144G	2 @ 400	32	1 @ 15	3	44.0	13.8/13.8	100	20/20	1	5	64.8	100
IDC20-1156G	2 @ 400	31	1 @ 15	3	44.0	13.8/13.8	100	20/20	1	5	64.8	100
IDC20-1168G	3 @ 350	35	1 @ 15	4	44.0	13.8/13.8/13.8	100	20/20/20	1	7.5	75.3	100
IDC20-1180G	3 @ 350	35	1 @ 15	4	44.0	13.8/13.8/13.8	100	20/20/20	1	7.5	75.3	100
IDC20-2192G	3 @ 350	35	2 @ 7.5	4	44.0	13.8/13.8/13.8	100	20/20/20	1	7.5	75.3	100



INDUSTRIAL DIRECT DRIVE 20

**Positive Indirect Gas Heated Air Curtain
Electrical Performance Sheet**

480/3/60 (voltage code H)													
TOTAL MOTOR AMP DRAW													
MULTIPLE CKT - MOTOR PANEL & HEATER													
MODEL	HEATER MBH	Temp Rise °F	Qty @ HP	# CKTS	AMPS PER CIRCUIT		BREAKER RATING PER CIRCUIT		SINGLE CKT - MOTOR PANEL & XFMR FOR HEATER				
					MOTOR 480V CKT	HEATER 120V CKT	MOTOR 480V CKT	HEATER 120V CKT	# CKTS	XFMR KVA	AMPS PER CIRCUIT (including XFMR)	BREAKER RATING PER CIRCUIT	
IDC20-1060G	1 @ 350	39	1 @ 5	2	7.9	13.8	20	20	1	2	12.1	20	
IDC20-1072G	1 @ 350	33	1 @ 5	2	7.9	13.8	20	20	1	2	12.1	20	
IDC20-1084G	1 @ 350	30	1 @ 5	2	7.9	13.8	20	20	1	2	12.1	20	
IDC20-1096G	2 @ 250	33	1 @ 7.5	3	11.0	8.0/8.0	25	15/15	1	2	15.2	25	
IDC20-1108G	2 @ 250	30	1 @ 7.5	3	11.0	8.0/8.0	25	15/15	1	2	15.2	25	
IDC20-1120G	2 @ 350	34	1 @ 10	3	15.3	13.8/13.8	30	20/20	1	5	25.7	35	
IDC20-1132G	2 @ 350	33	1 @ 10	3	15.3	13.8/13.8	30	20/20	1	5	25.7	35	
IDC20-1144G	2 @ 400	32	1 @ 15	3	22.0	13.8/13.8	45	20/20	1	5	32.4	45	
IDC20-1156G	2 @ 400	31	1 @ 15	3	22.0	13.8/13.8	45	20/20	1	5	32.4	45	
IDC20-1168G	3 @ 350	35	1 @ 15	4	22.0	13.8/13.8/13.8	45	20/20/20	1	7.5	37.6	50	
IDC20-1180G	3 @ 350	35	1 @ 15	4	22.0	13.8/13.8/13.8	45	20/20/20	1	7.5	37.6	50	
IDC20-2192G	3 @ 350	35	2 @ 7.5	4	22.0	13.8/13.8/13.8	45	20/20/20	1	7.5	37.6	50	



INDUSTRIAL DIRECT DRIVE 20

**Positive Indirect Gas Heated Air Curtain
Electrical Performance Sheet**

600/3/60 (voltage code I)														
TOTAL MOTOR AMP DRAW														
					MULTIPLE CKT - MOTOR PANEL & HEATER				SINGLE CKT - MOTOR PANEL & XFMR FOR HEATER					
MODEL	HEATER MBH	Temp Rise °F	Qty @ HP	# CKTS	AMPS PER CIRCUIT		BREAKER RATING PER CIRCUIT		# CKTS	XFMR KVA	AMPS PER CIRCUIT (including XFMR)	BREAKER RATING PER CIRCUIT		
					MOTOR 600V CKT	HEATER 120V CKT	MOTOR 600V CKT	HEATER 120V CKT						
IDC20-1060G	1 @ 350	39	1 @ 5	2	6.3	13.8	15	20	1	2	9.6	15		
IDC20-1072G	1 @ 350	33	1 @ 5	2	6.3	13.8	15	20	1	2	9.6	15		
IDC20-1084G	1 @ 350	30	1 @ 5	2	6.3	13.8	15	20	1	2	9.6	15		
IDC20-1096G	2 @ 250	33	1 @ 7.5	3	8.5	8.0/8.0	20	15/15	1	2	11.8	20		
IDC20-1108G	2 @ 250	30	1 @ 7.5	3	8.5	8.0/8.0	20	15/15	1	2	11.8	20		
IDC20-1120G	2 @ 350	34	1 @ 10	3	11.7	13.8/13.8	25	20/20	1	5	20.0	25		
IDC20-1132G	2 @ 350	33	1 @ 10	3	11.7	13.8/13.8	25	20/20	1	5	20.0	25		
IDC20-1144G	2 @ 400	32	1 @ 15	3	17.5	13.8/13.8	35	20/20	1	5	25.8	35		
IDC20-1156G	2 @ 400	31	1 @ 15	3	17.5	13.8/13.8	35	20/20	1	5	25.8	35		
IDC20-1168G	3 @ 350	35	1 @ 15	4	17.5	13.8/13.8/13.8	35	20/20/20	1	7.5	30.0	40		
IDC20-1180G	3 @ 350	35	1 @ 15	4	17.5	13.8/13.8/13.8	35	20/20/20	1	7.5	30.0	40		
IDC20-2192G	3 @ 350	35	2 @ 7.5	4	17.0	13.8/13.8/13.8	35	20/20/20	1	7.5	29.5	40		



INDUSTRIAL DIRECT DRIVE 20

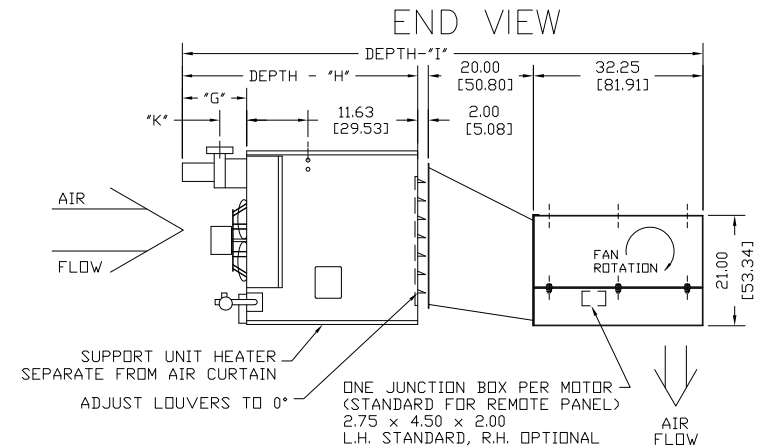
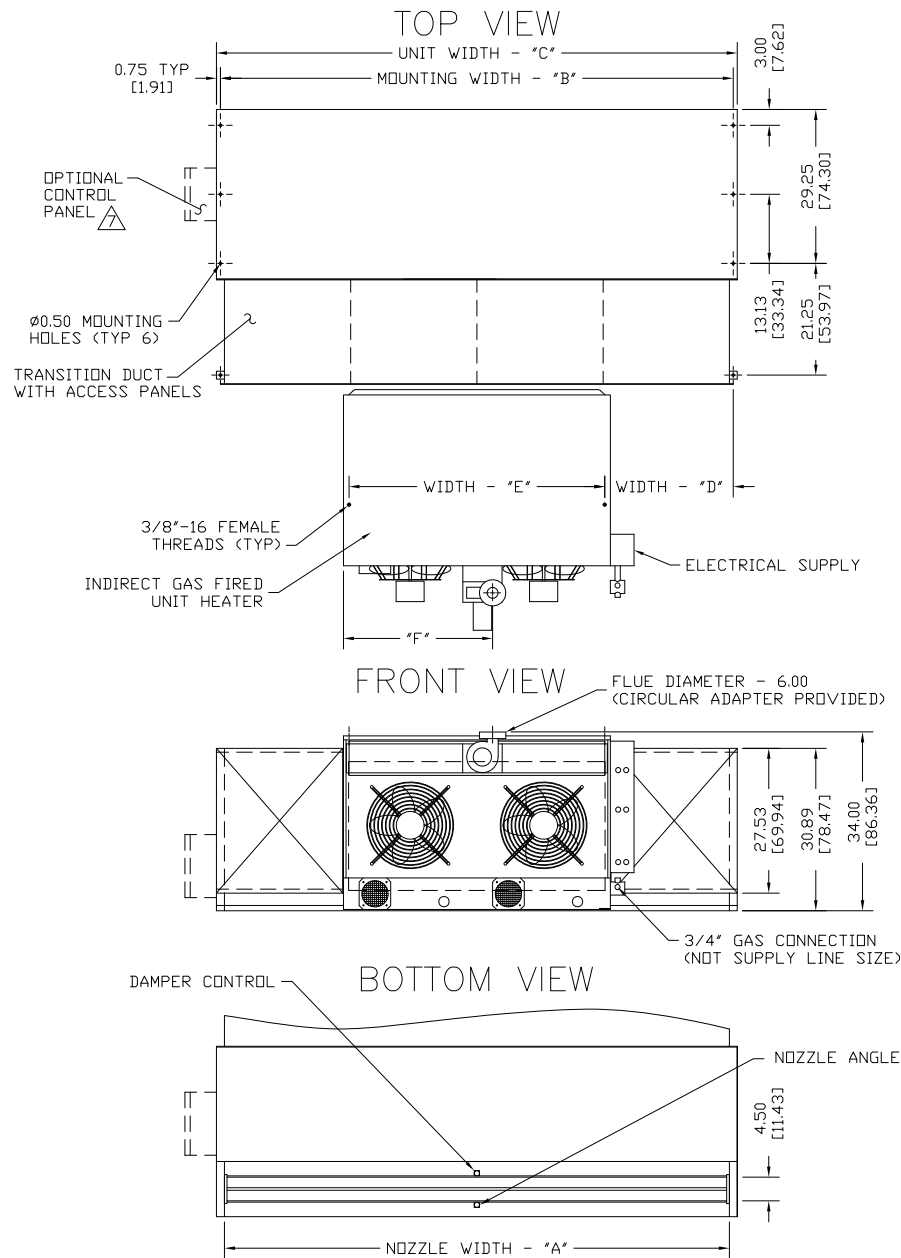
**Positive Indirect Gas Heated Air Curtain
Electrical Performance Sheet**

380/3/50 (voltage code T)												
TOTAL MOTOR AMP DRAW												
				MULTIPLE CKT - MOTOR PANEL & HEATER				SINGLE CKT - MOTOR PANEL & XFMR FOR HEATER				
MODEL	HEATER MBH	Temp Rise °F	Qty @ HP	# CKTS	AMPS PER CIRCUIT		BREAKER RATING PER CIRCUIT		# CKTS	XFMR KVA	AMPS PER CIRCUIT (including XFMR)	BREAKER RATING PER CIRCUIT
					MOTOR 380V CKT	HEATER 120V CKT	MOTOR 380V CKT	HEATER 120V CKT				
IDC20-1060G	1 @ 350	39	1 @ 5	2	7.7	13.8	20	20	1	2	13.0	20
IDC20-1072G	1 @ 350	33	1 @ 5	2	7.7	13.8	20	20	1	2	13.0	20
IDC20-1084G	1 @ 350	30	1 @ 5	2	7.7	13.8	20	20	1	2	13.0	20
IDC20-1096G	2 @ 250	33	1 @ 7.5	3	9.0	8.0/8.0	20	15/15	1	2	14.3	20
IDC20-1108G	2 @ 250	30	1 @ 7.5	3	9.0	8.0/8.0	20	15/15	1	2	14.3	20
IDC20-1120G	2 @ 350	34	1 @ 10	3	12.5	13.8/13.8	25	20/20	1	5	25.7	35
IDC20-1132G	2 @ 350	33	1 @ 10	3	12.5	13.8/13.8	25	20/20	1	5	25.7	35
IDC20-1144G	2 @ 400	32	1 @ 15	3	18.0	13.8/13.8	40	20/20	1	5	31.2	40
IDC20-1156G	2 @ 400	31	1 @ 15	3	18.0	13.8/13.8	40	20/20	1	5	31.2	40
IDC20-1168G	3 @ 350	35	1 @ 15	4	18.0	13.8/13.8/13.8	40	20/20/20	1	7.5	37.7	50
IDC20-1180G	3 @ 350	35	1 @ 15	4	18.0	13.8/13.8/13.8	40	20/20/20	1	7.5	37.7	50
IDC20-2192G	3 @ 350	35	2 @ 7.5	4	18.0	13.8/13.8/13.8	40	20/20/20	1	7.5	37.7	50

IDC20 INDIRECT GAS HEATED ONE HEATER SYSTEM FRONT INTAKE

NOTES:

- ⚠️ AIR CURTAIN MUST BE INSTALLED SO AIR STREAM IS NOT OBSTRUCTED WHEN DEFLECTED 20° TO EITHER SIDE OF ϕ .
- ⚠️ ELECTRICAL CONNECTIONS TO BE FLEXIBLE.
- ⚠️ FIELD VERIFY DIMENSIONS.
- ⚠️ ANCHORS TO SUPPORTING STRUCTURE BY OTHERS.
- ⚠️ ADEQUACY OF SUPPORTING STRUCTURE IS TO BE VERIFIED BY A PROFESSIONAL STRUCTURAL ENGINEER.
- ⚠️ LETTER 'G' IN MODEL NUMBER DESIGNATES POSITIVE INDIRECT GAS HEATED UNIT. THE 'F' DESIGNATES FRONT INTAKE.
- ⚠️ OPTIONAL CONTROL PANEL AVAILABLE: LEFT HAND MOUNT, RIGHT HAND MOUNT, OR REMOTE. PLEASE SPECIFY.
- ⚠️ SUPPLY PRESSURES HIGHER THAN 0.50 POUND REQUIRE INSTALLATION OF AN ADDITIONAL SERVICE REGULATOR EXTERNAL TO THE UNIT.
- ⚠️ DIMENSIONS IN INCHES (CENTIMETERS).



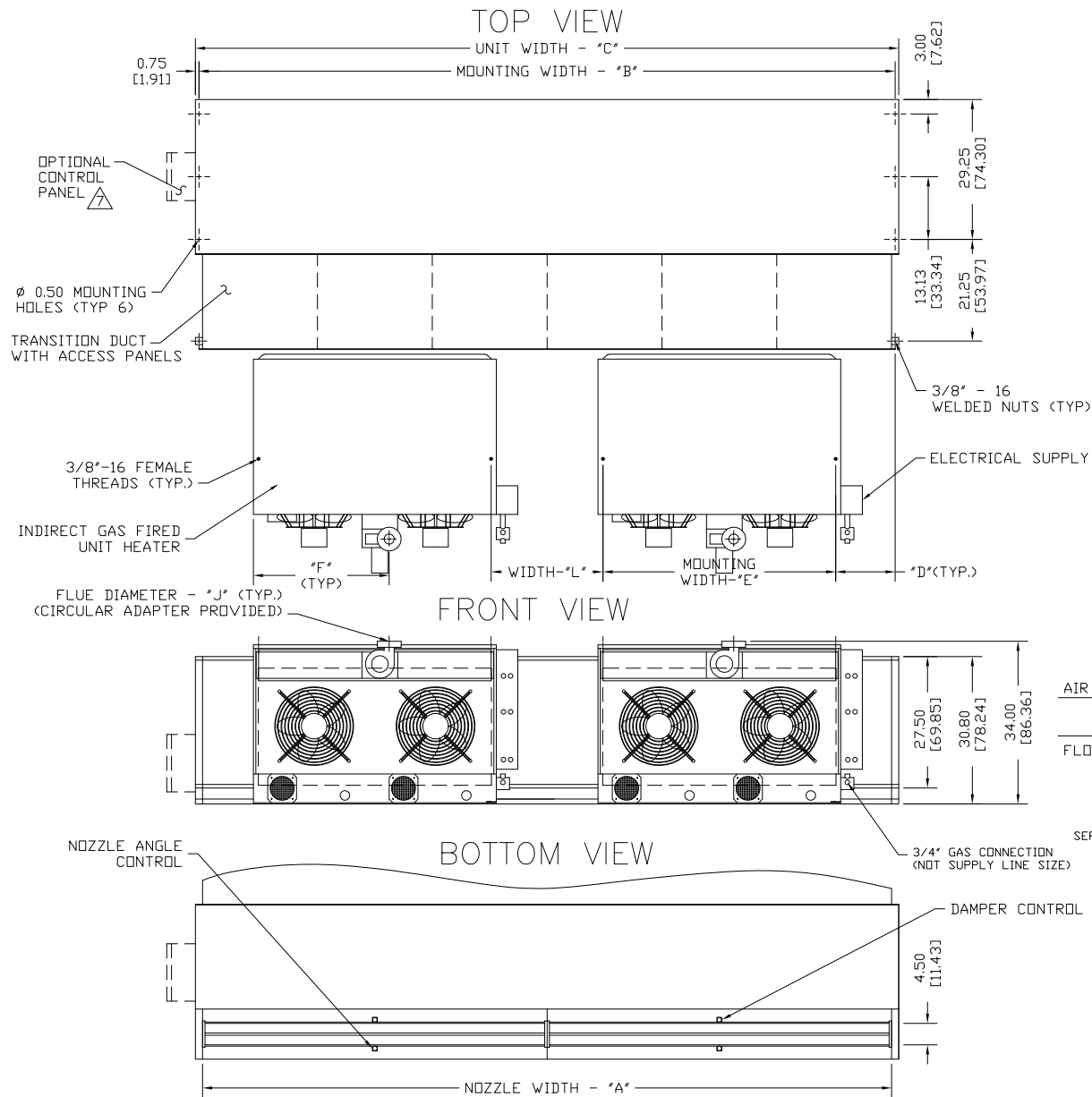
CAUTION:

HEATER IS EQUIPPED FOR A MAXIMUM GAS SUPPLY PRESSURE OF 1/2 POUND, 8 OUNCES, OR 14 INCHES WATER COLUMN.

MODEL	NOZZLE WIDTH 'A'	MOUNTING WIDTH 'B'	UNIT WIDTH 'C'	TOTAL NO. HEATER(S) @ MBTU INPUT	UNIT TO HTR. MOUNTING WIDTH 'D'	HEATER MOUNTING WIDTH 'E'	HTR. CABINET TO ϕ OF FLUE WIDTH 'F'	OVERALL FLUE DEPTH 'G'	OVERALL HEATER DEPTH 'H'	OVERALL SYSTEM DEPTH 'I'	FLUE DIAMETER 'J'	HTR. CABINET TO FLUE ϕ DEPTH 'K'	BETWEEN HTR. MOUNTING WIDTH 'L'	PROJECT	LOCATION	ARCHITECT	ENGINEER	REV.	A	
														DWG. NO.	DATE	BY	REPLACES	BY	TITLE:	
IDC20-1060G-FT	60.00 [152.40]	61.50 [156.21]	63.00 [160.02]	1 @ 350	6.44 [16.36]	48.63 [123.52]	28.38 [72.08]	12.25 [31.12]	44.75 [113.66]	99.00 [251.46]	6.00 [15.24]	5.13 [13.03]	-	IDC20-IGF1-XF	07MAY2021	S. Beil	02DEC2020	A.Johnston		
IDC20-1072G-FT	72.00 [182.88]	73.50 [186.69]	75.00 [190.50]	1 @ 350	12.44 [31.60]	48.63 [123.52]	28.38 [72.08]	12.25 [31.12]	44.75 [113.66]	99.00 [251.46]	6.00 [15.24]	5.13 [13.03]	-							
IDC20-1084G-FT	84.00 [213.36]	85.50 [217.17]	87.00 [220.98]	1 @ 350	18.44 [46.84]	48.63 [123.52]	28.38 [72.08]	12.25 [31.12]	44.75 [113.66]	99.00 [251.46]	6.00 [15.24]	5.13 [13.03]	-							

BERNER
MODEL IDC20 AIR CURTAIN
INDIRECT GAS FIRED - ONE HEATER SYSTEM
BERNER INTERNATIONAL CORP.
NEW CASTLE, PA.

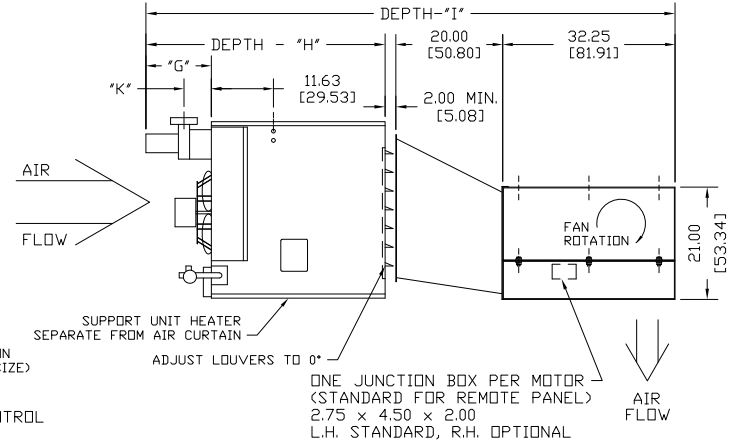
IDC20 INDIRECT GAS HEATED TWO HEATER SYSTEM FRONT INTAKE



NOTES:

- 1 AIR CURTAIN MUST BE INSTALLED SO AIR STREAM IS NOT OBSTRUCTED WHEN DEFLECTED 20° TO EITHER SIDE OF ϕ .
- 2 ELECTRICAL CONNECTIONS TO BE FLEXIBLE.
- 3 FIELD VERIFY DIMENSIONS.
- 4 ANCHORS TO SUPPORTING STRUCTURE BY OTHERS.
- 5 ADEQUACY OF SUPPORTING STRUCTURE IS TO BE VERIFIED BY A PROFESSIONAL STRUCTURAL ENGINEER.
- 6 LETTER "G" IN MODEL NUMBER DESIGNATES, POSITIVE INDIRECT GAS HEATED UNIT. THE "F" DESIGNATES FRONT INTAKE.
- 7 OPTIONAL CONTROL PANEL AVAILABLE: LEFT HAND MOUNT, RIGHT HAND MOUNT, OR REMOTE. PLEASE SPECIFY.
- 8 SUPPLY PRESSURES HIGHER THAN 0.50 POUND REQUIRE INSTALLATION OF AN ADDITIONAL SERVICE REGULATOR EXTERNAL TO THE UNIT.
- 9 DIMENSIONS IN INCHES [CENTIMETERS].

END VIEW



CAUTION:

HEATER IS EQUIPPED FOR A MAXIMUM GAS SUPPLY PRESSURE OF 1/2 POUND, 8 OUNCES, OR 14 INCHES WATER COLUMN.

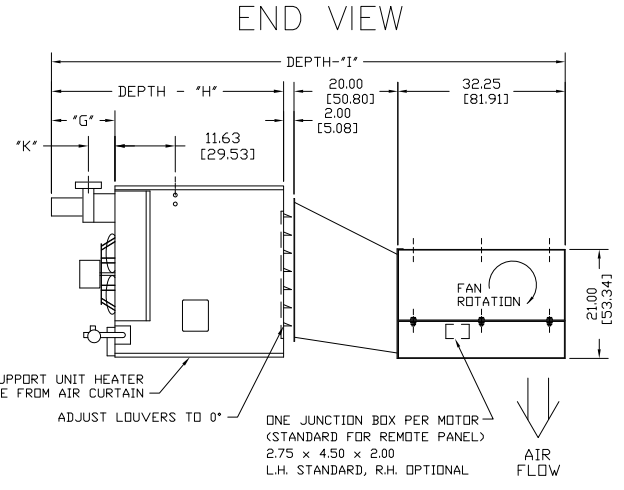
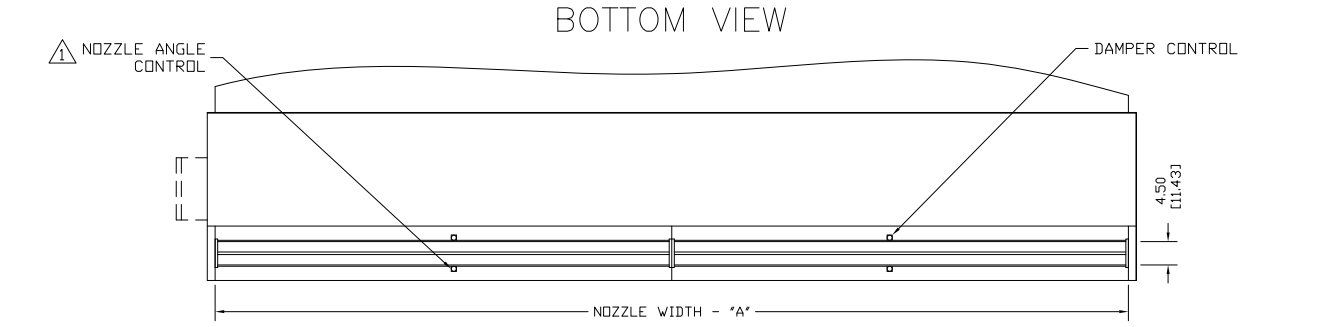
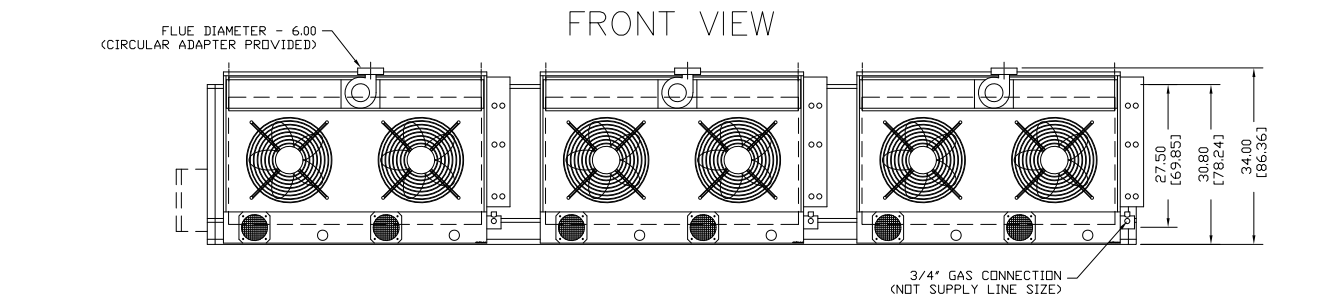
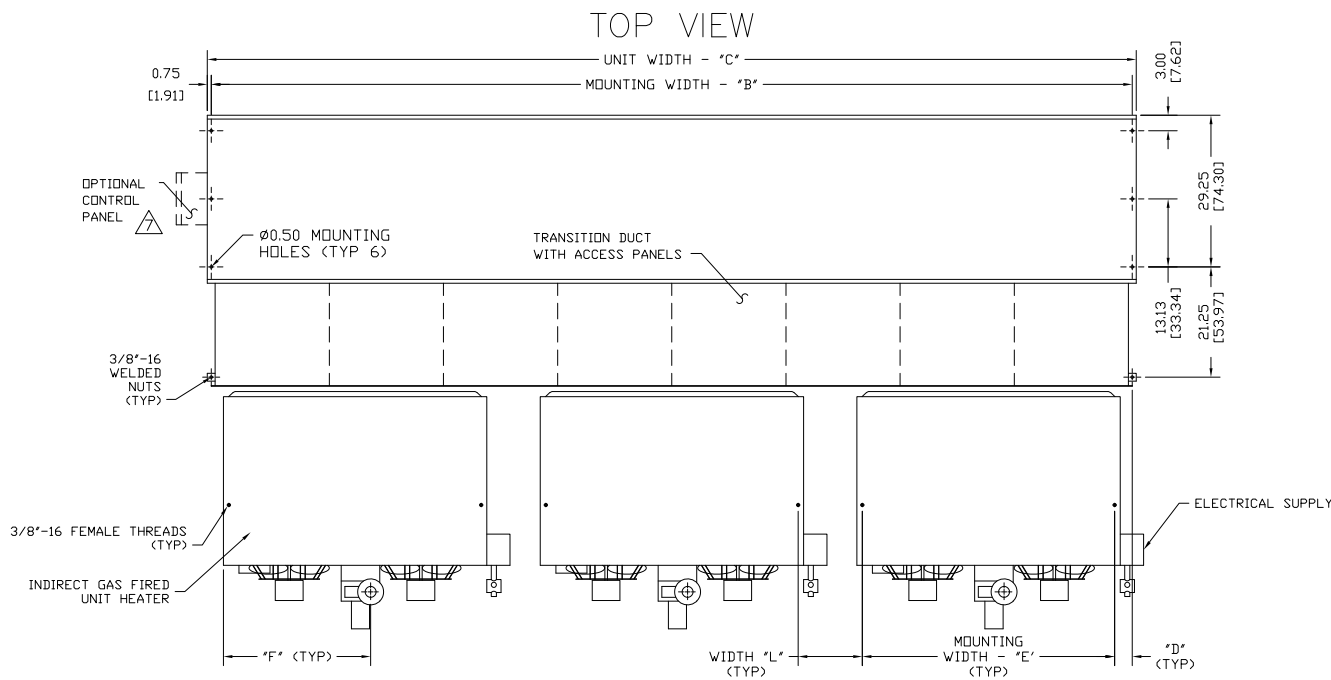
MODEL	NOZZLE WIDTH "A"	MOUNTING WIDTH "B"	UNIT WIDTH "C"	TOTAL NO. HEATER(S) @ MBTU INPUT	UNIT TO HTR. MOUNTING WIDTH "D"	HEATER MOUNTING WIDTH "E"	HTR. CABINET TO ϕ OF FLUE WIDTH "F"	OVERALL FLUE DEPTH "G"	OVERALL HEATER DEPTH "H"	OVERALL SYSTEM DEPTH "I"	FLUE DIAMETER "J"	HTR. CABINET TO FLUE ϕ DEPTH "K"	BETWEEN HTR. MOUNTING WIDTH "L"	PROJECT	LOCATION	ARCHITECT	ENGINEER	REV.	
IDC20-1096G-FT	96.00 [243.84]	97.50 [247.65]	99.00 [251.46]	2 @ 250	9.44 [23.98]	30.63 [77.80]	19.38 [49.20]	11.00 [27.94]	43.50 [110.50]	97.75 [248.28]	5.00 [12.70]	4.75 [12.06]	17.38 [44.14]					A	
IDC20-1108G-FT	108.00 [274.32]	109.50 [278.13]	111.00 [281.94]	2 @ 250	12.44 [31.60]	30.63 [77.80]	19.38 [49.20]	11.00 [27.94]	43.50 [110.50]	97.75 [248.28]	5.00 [12.70]	4.75 [12.06]	23.38 [59.38]	DWG. NO.	IDC20-IGF2-XF	DATE	07MAY2021	TITLE:	BERNER
IDC20-1120G-FT	117.00 [297.18]	118.50 [300.99]	120.00 [304.80]	2 @ 350	5.69 [14.45]	48.63 [123.52]	28.38 [72.06]	12.25 [31.12]	44.75 [113.66]	99.00 [251.46]	6.00 [15.24]	5.13 [13.03]	9.88 [25.09]	BY	S. Beil	REPLACES	08DEC2020	INDIRECT GAS FIRED - TWO HEATER SYSTEM	
IDC20-1132G-FT	132.00 [335.28]	133.50 [339.09]	135.00 [342.90]	2 @ 350	9.44 [23.98]	48.63 [123.52]	28.38 [72.06]	12.25 [31.12]	44.75 [113.66]	99.00 [251.46]	6.00 [15.24]	5.13 [13.03]	17.38 [44.14]	BY	A. Johnston			BERNER INTERNATIONAL CORP. NEW CASTLE, PA.	
IDC20-1144G-FT	144.00 [365.76]	145.50 [369.57]	147.00 [373.38]	2 @ 400	12.44 [31.60]	48.63 [123.52]	28.38 [72.06]	12.25 [31.12]	44.75 [113.66]	99.00 [251.46]	6.00 [15.24]	5.13 [13.03]	23.38 [59.38]						
IDC20-1156G-FT	156.00 [396.24]	157.50 [400.05]	159.00 [403.86]	2 @ 400	15.44 [39.22]	48.63 [123.52]	28.38 [72.06]	12.25 [31.12]	44.75 [113.66]	99.00 [251.46]	6.00 [15.24]	5.13 [13.03]	29.38 [74.62]						

IDC20

INDIRECT GAS HEATED THREE HEATER SYSTEM FRONT INTAKE

NOTES:

- ⚠️ AIR CURTAIN MUST BE INSTALLED SO AIR STREAM IS NOT OBSTRUCTED WHEN DEFLECTED 20° TO EITHER SIDE OF ϕ .
- ⚠️ ELECTRICAL CONNECTIONS TO BE FLEXIBLE.
- ⚠️ FIELD VERIFY DIMENSIONS.
- ⚠️ ANCHORS TO SUPPORTING STRUCTURE BY OTHERS.
- ⚠️ ADEQUACY OF SUPPORTING STRUCTURE IS TO BE VERIFIED BY A PROFESSIONAL STRUCTURAL ENGINEER.
- ⚠️ LETTER "G" IN MODEL NUMBER DESIGNATES, POSITIVE INDIRECT GAS HEATED UNIT. THE "F" DESIGNATES FRONT INTAKE.
- ⚠️ OPTIONAL CONTROL PANEL AVAILABLE: LEFT HAND MOUNT, RIGHT HAND MOUNT, OR REMOTE. PLEASE SPECIFY.
- ⚠️ SUPPLY PRESSURES HIGHER THAN 0.50 POUND REQUIRE INSTALLATION OF AN ADDITIONAL SERVICE REGULATOR EXTERNAL TO THE UNIT.
- ⚠️ DIMENSIONS IN INCHES (CENTIMETERS).



CAUTION:

HEATER IS EQUIPPED FOR A MAXIMUM GAS SUPPLY PRESSURE OF 1/2 POUND, 8 OUNCES, OR 14 INCHES WATER COLUMN.

MODEL	NOZZLE WIDTH 'A'	MOUNTING WIDTH 'B'	UNIT WIDTH 'C'	TOTAL NO. HEATER(S) @ MBTU INPUT	UNIT TO HTR. MOUNTING WIDTH 'D'	HEATER MOUNTING WIDTH 'E'	HTR. CABINET TO ϕ OF FLUE WIDTH 'F'	OVERALL FLUE DEPTH 'G'	OVERALL HEATER DEPTH 'H'	OVERALL SYSTEM DEPTH 'I'	FLUE DIAMETER 'J'	HTR. CABINET TO FLUE ϕ DEPTH 'K'	BETWEEN HTR. MOUNTING WIDTH 'L'	PROJECT	LOCATION	ARCHITECT	ENGINEER	REV.	B	
														DWG. NO.	DATE	TITLE				
IDC20-1168G-FT	168.00 [426.72]	169.50 [430.53]	171.00 [434.34]	3 @ 350	4.44 [11.28]	48.63 [123.52]	28.38 [72.08]	12.25 [31.12]	44.75 [113.66]	99.00 [251.46]	6.00 [15.24]	5.13 [13.02]	7.38 [18.74]	07MAY2021						
IDC20-1180G-FT	180.00 [457.20]	181.50 [461.01]	183.00 [464.82]	3 @ 350	6.44 [16.36]	48.63 [123.52]	28.38 [72.08]	12.25 [31.12]	44.75 [113.66]	99.00 [251.46]	6.00 [15.24]	5.13 [13.02]	11.38 [28.90]	14JAN2021						
IDC20-1192G-FT	192.00 [487.68]	193.50 [491.49]	195.00 [495.30]	3 @ 350	8.44 [21.44]	48.63 [123.52]	28.38 [72.08]	12.25 [31.12]	44.75 [113.66]	99.00 [251.46]	6.00 [15.24]	5.13 [13.02]	15.38 [39.06]							

BERNER
MODEL IDC20 AIR CURTAIN
INDIRECT GAS FIRED - THREE HEATER SYSTEM
BERNER INTERNATIONAL CORP.
NEW CASTLE, PA.