



INDUSTRIAL DIRECT DRIVE 16

Positive Indirect Gas Heated Air Curtain

Data Sheet

For Mounting Heights To 16' (environmental separation)

STANDARD CONSTRUCTION

- Single speed T.E.A.O. motor(s) - direct drive
- Gray powder coated exterior (Optional: Custom Color or Stainless)
- Split cabinet construction for fan assembly removal
- Top Mounting only
- Front air intake only
- High efficiency Pro-V Nozzle

- Factory mounted duct transition with bottom access panels
- Field installed ETL (US and Canada) & AHRI Certified indirect gas heater(s):
 - Aluminized steel heat exchanger (Optional: Stainless)
 - Steel cabinet with beige finish
 - Spark ignited pilot
 - Power venter
 - Separate 120V power supply required (Optional: transformer for single point connection)

**2 Year
Limited
Warranty**



MODEL	Nozzle Width (in)	Max Vel. at Nozzle (fpm)	Avg. Outlet Vel. (fpm)	Air Volume (cfm)	Outlet Vel. Uniformity	Power Rating (kW)	Motor(s) @ hp	Heater(s) @ Input (MBH)	Total Heater Output (MBH)	Air Temp. Rise (°F)	Net Wt. Air Curtain (lbs)	Net Wt. Duct Trans. (lbs)	Net Wt. Heater (lbs)
IDC16-1060G	60.00	5,145	3,302	5,359	85%	2.80	1 @ 3	1 @ 250	207.5	36°	370	109	214
IDC16-1072G	72.00	5,005	2,944	6,256	91%	2.90	1 @ 3	1 @ 300	249.0	37°	410	133	311
IDC16-1084G	84.00	4,644	2,732	6,772	89%	3.00	1 @ 3	1 @ 300	249.0	34°	450	148	311
IDC16-1096G	96.00	5,352	3,148	8,920	87%	4.10	1 @ 5	1 @ 400	332.0	34°	550	163	339
IDC16-1108G	108.00	5,236	3,080	9,817	86%	4.20	1 @ 5	2 @ 250	415.0	39°	670	171	2 @ 214
IDC16-1120G	117.00	6,012	3,627	12,526	87%	4.80	1 @ 7.5	2 @ 300	498.0	37°	705	177	2 @ 311
IDC16-1132G	132.00	5,602	3,296	12,839	86%	4.90	1 @ 7.5	2 @ 300	498.0	36°	755	196	2 @ 311
IDC16-1144G	144.00	5,225	3,074	13,062	85%	5.40	1 @ 7.5	2 @ 300	498.0	35°	795	211	2 @ 311
IDC16-1156G	156.00	4,943	2,908	13,388	84%	5.50	1 @ 7.5	2 @ 350	581.0	40°	845	286	2 @ 325
IDC16-2168G	168.00	5,203	3,061	15,176	89%	7.00	1 @ 5, 1 @ 3	2 @ 350	581.0	35°	950	301	2 @ 325
IDC16-2180G	180.00	5,143	3,026	16,073	87%	7.10	1 @ 5, 1 @ 3	2 @ 400	664.0	38°	1,015	316	2 @ 339
IDC16-2192G	192.00	5,352	3,148	17,840	87%	8.20	2 @ 5	2 @ 400	664.0	34°	1,080	330	2 @ 339

NOTES:

1. Operation at 50 Hz will generate approximately a 17% reduction in performance. Consult factory for gas heater sizing.
2. Performance data based on AMCA licensed data from unheated units.
3. Gas supply pressure for each heater: (Min 0.18 psi or 5 inch wc) to (Max 0.50 psi or 14 inch wc).
4. Maximum leaving air temperature shall not exceed 120°F.
5. CAUTION: Indirect Gas Heaters are not intended for use in high humidity applications.
6. Gas heater(s) shall not be directly connected to transition, min of 2" gap, and requires individual support.
7. Duct transition is factory mounted to air curtain and requires individual support.
8. Heaters are "Separated Combustion" ready for two-pipe venting. If venting concentrically, Combustion Air Inlet kit required.
9. Vertically mounted indirect gas heated air curtain not available.

See sheet EP-428 for amp draws/total load requirements.

MODEL NUMBER CONFIGURATION

IDC16-1 060 G D-F-SS

Series	# of Mo-	Opening Width	Heat	Voltage	Intake	Opt. Cabinet Fin-
IDC16	1, 2	060" - 192"	G=Indirect Gas Heated	D=208/3/60 E=240/3/60 H=480/3/60 I=600/3/60 T=380/3/50	F=Front	SS=Stainless Steel CC=Custom Color

Sound level measured 10' (3m) from the unit in free field:
3, 5, 7½, (5 + 3) & (5 + 5) hp motor(s):
68 dBA, 70 dBA, 71 dBA, 72 dBA & 73 dBA

Berner reserves the right to alter specifications without prior notice.

www.berner.com Berner International 800.245.4455
111 Progress Ave. / New Castle / PA / 16101 / USA

DS-428
May, 2023



INDUSTRIAL DIRECT DRIVE 16

Positive Indirect Gas Heated Air Curtain
Electrical Performance Sheet

				208/3/60 (voltage code D) MOTOR AMP DRAW PER HP								
MODEL	HEATER MBH	Temp Rise °F	Qty @ HP	# CKTS	MULTIPLE CKT - MOTOR PANEL & HEATER				SINGLE CKT - MOTOR PANEL & XFMR FOR HEATER			
					AMPS PER CIRCUIT		BREAKER RATING PER CIRCUIT		# CKTS	XFMR KVA	AMPS PER CIRCUIT (including XFMR)	BREAKER RATING PER CIRCUIT
					MOTOR 208V CKT	HEATER 120V CKT	MOTOR 208V CKT	HEATER 120V CKT				
IDC16-1060G	1 @ 250	36	1 @ 3	2	13.1	8.0	25	15	1	1	17.9	25
IDC16-1072G	1 @ 300	37	1 @ 3	2	13.1	11.6	25	15	1	2	22.7	30
IDC16-1084G	1 @ 300	34	1 @ 3	2	13.1	11.6	25	15	1	2	22.7	30
IDC16-1096G	1 @ 400	34	1 @ 5	2	17.0	13.8	35	20	1	2	26.6	35
IDC16-1108G	2 @ 250	39	1 @ 5	3	17.0	8.0/8.0	35	15/15	1	2	26.6	35
IDC16-1120G	2 @ 300	37	1 @ 7.5	3	23.0	11.6/11.6	50	15/15	1	3	37.4	50
IDC16-1132G	2 @ 300	36	1 @ 7.5	3	23.0	11.6/11.6	50	15/15	1	3	37.4	50
IDC16-1144G	2 @ 300	35	1 @ 7.5	3	23.0	11.6/11.6	50	15/15	1	3	37.4	50
IDC16-1156G	2 @ 350	40	1 @ 7.5	3	23.0	13.8/13.8	50	20/20	1	5	47.0	60
IDC16-2168G	2 @ 350	35	1 @ 3 1 @ 5	3	30.1	13.8/13.8	50	20/20	1	5	54.1	70
IDC16-2180G	2 @ 400	38	1 @ 3 1 @ 5	3	30.1	13.8/13.8	50	20/20	1	5	54.1	70
IDC16-2192G	2 @ 400	34	2 @ 5	3	34.0	13.8/13.8	60	20/20	1	5	58.0	100



INDUSTRIAL DIRECT DRIVE 16

**Positive Indirect Gas Heated Air Curtain
Electrical Performance Sheet**

240/3/60 (voltage code E)
MOTOR AMP DRAW PER HP

MODEL	HEATER MBH	Temp Rise °F	Qty @ HP	# CKTS	MULTIPLE CKT - MOTOR PANEL & HEATER				SINGLE CKT - MOTOR PANEL & XFMR FOR HEATER			
					AMPS PER CIRCUIT		BREAKER RATING PER CIRCUIT		# CKTS	XFMR KVA	AMPS PER CIRCUIT (including XFMR)	BREAKER RATING PER CIRCUIT
					MOTOR 240V CKT	HEATER 120V CKT	MOTOR 240V CKT	HEATER 120V CKT				
IDC16-1060G	1 @ 250	36	1 @ 3	2	12.2	8.0	25	15	1	1	16.4	25
IDC16-1072G	1 @ 300	37	1 @ 3	2	12.2	11.6	25	15	1	2	20.5	30
IDC16-1084G	1 @ 300	34	1 @ 3	2	12.2	11.6	25	15	1	2	20.5	30
IDC16-1096G	1 @ 400	34	1 @ 5	2	15.8	13.8	35	20	1	2	24.1	35
IDC16-1108G	2 @ 250	39	1 @ 5	3	15.8	8.0/8.0	35	15/15	1	2	24.1	35
IDC16-1120G	2 @ 300	37	1 @ 7.5	3	22.0	11.6/11.6	45	15/15	1	3	34.5	45
IDC16-1132G	2 @ 300	36	1 @ 7.5	3	22.0	11.6/11.6	45	15/15	1	3	34.5	45
IDC16-1144G	2 @ 300	35	1 @ 7.5	3	22.0	11.6/11.6	45	15/15	1	3	34.5	45
IDC16-1156G	2 @ 350	40	1 @ 7.5	3	22.0	13.8/13.8	45	20/20	1	5	42.8	60
IDC16-2168G	2 @ 350	35	1 @ 3 1 @ 5	3	28.0	13.8/13.8	60	20/20	1	5	48.8	70
IDC16-2180G	2 @ 400	38	1 @ 3 1 @ 5	3	28.0	13.8/13.8	60	20/20	1	5	48.8	70
IDC16-2192G	2 @ 400	34	2 @ 5	3	31.6	13.8/13.8	60	20/20	1	5	52.4	70



INDUSTRIAL DIRECT DRIVE 16

Positive Indirect Gas Heated Air Curtain
Electrical Performance Sheet

480/3/60 (voltage code H)												
MOTOR AMP DRAW PER HP												
					MULTIPLE CKT - MOTOR PANEL & HEATER				SINGLE CKT - MOTOR PANEL & XFMR FOR HEATER			
MODEL	HEATER MBH	Temp Rise °F	Qty @ HP	# CKTS	AMPS PER CIRCUIT		BREAKER RATING PER CIRCUIT		# CKTS	XFMR KVA	AMPS PER CIRCUIT (including XFMR)	BREAKER RATING PER CIRCUIT
					MOTOR 480V CKT	HEATER 120V CKT	MOTOR 480V CKT	HEATER 120V CKT				
IDC16-1060G	1 @ 250	36	1 @ 3	2	6.1	8.0	15	15	1	1	8.2	15
IDC16-1072G	1 @ 300	37	1 @ 3	2	6.1	11.6	15	15	1	2	10.3	15
IDC16-1084G	1 @ 300	34	1 @ 3	2	6.1	11.6	15	15	1	2	10.3	15
IDC16-1096G	1 @ 400	34	1 @ 5	2	7.9	13.8	20	20	1	2	12.1	20
IDC16-1108G	2 @ 250	39	1 @ 5	3	7.9	8.0/8.0	20	15/15	1	2	12.1	20
IDC16-1120G	2 @ 300	37	1 @ 7.5	3	11.0	11.6/11.6	25	15/15	1	3	17.3	25
IDC16-1132G	2 @ 300	36	1 @ 7.5	3	11.0	11.6/11.6	25	15/15	1	3	17.3	25
IDC16-1144G	2 @ 300	35	1 @ 7.5	3	11.0	11.6/11.6	25	15/15	1	3	17.3	25
IDC16-1156G	2 @ 350	40	1 @ 7.5	3	11.0	13.8/13.8	25	20/20	1	5	21.4	30
IDC16-2168G	2 @ 350	35	1 @ 3 1 @ 5	3	14.0	13.8/13.8	25	20/20	1	5	24.4	35
IDC16-2180G	2 @ 400	38	1 @ 3 1 @ 5	3	14.0	13.8/13.8	25	20/20	1	5	24.4	35
IDC16-2192G	2 @ 400	34	2 @ 5	3	15.8	13.8/13.8	25	20/20	1	5	26.2	35



INDUSTRIAL DIRECT DRIVE 16

Positive Indirect Gas Heated Air Curtain
Electrical Performance Sheet

600/3/60 (voltage code I)
MOTOR AMP DRAW PER HP

MODEL	HEATER MBH	Temp Rise °F	Qty @ HP	# CKTS	MULTIPLE CKT - MOTOR PANEL & HEATER				SINGLE CKT - MOTOR PANEL & XFMR FOR HEATER			
					AMPS PER CIRCUIT		BREAKER RATING PER CIRCUIT		# CKTS	XFMR KVA	AMPS PER CIRCUIT (including XFMR)	BREAKER RATING PER CIRCUIT
					MOTOR 600V CKT	HEATER 120V CKT	MOTOR 600V CKT	HEATER 120V CKT				
IDC16-1060G	1 @ 250	36	1 @ 3	2	3.9	8.0	15	15	1	1	5.6	15
IDC16-1072G	1 @ 300	37	1 @ 3	2	3.9	11.6	15	15	1	2	7.2	15
IDC16-1084G	1 @ 300	34	1 @ 3	2	3.9	11.6	15	15	1	2	7.2	15
IDC16-1096G	1 @ 400	34	1 @ 5	2	6.3	13.8	15	20	1	2	9.6	15
IDC16-1108G	2 @ 250	39	1 @ 5	3	6.3	8.0/8.0	15	15/15	1	2	9.6	15
IDC16-1120G	2 @ 300	37	1 @ 7.5	3	8.5	11.6/11.6	20	15/15	1	3	13.5	20
IDC16-1132G	2 @ 300	36	1 @ 7.5	3	8.5	11.6/11.6	20	15/15	1	3	13.5	20
IDC16-1144G	2 @ 300	35	1 @ 7.5	3	8.5	11.6/11.6	20	15/15	1	3	13.5	20
IDC16-1156G	2 @ 350	40	1 @ 7.5	3	8.5	13.8/13.8	20	20/20	1	5	16.8	25
IDC16-2168G	2 @ 350	35	1 @ 3 1 @ 5	3	10.2	13.8/13.8	20	20/20	1	5	18.5	30
IDC16-2180G	2 @ 400	38	1 @ 3 1 @ 5	3	10.2	13.8/13.8	20	20/20	1	5	18.5	30
IDC16-2192G	2 @ 400	34	2 @ 5	3	12.6	13.8/13.8	20	20/20	1	5	20.9	30

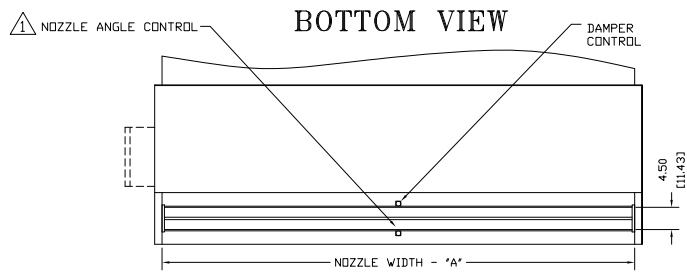
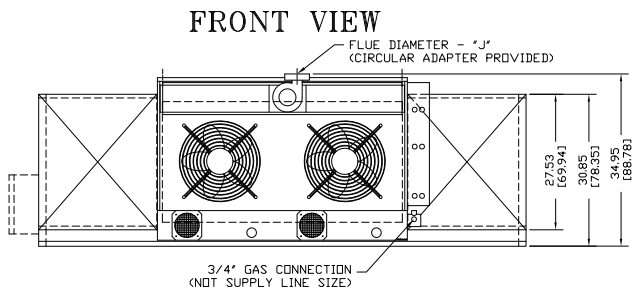
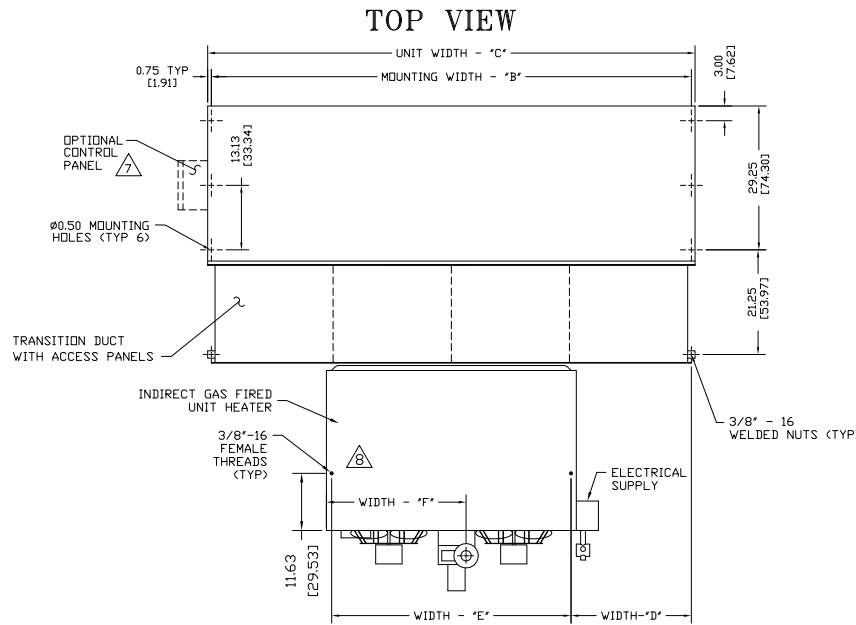


INDUSTRIAL DIRECT DRIVE 16

**Positive Indirect Gas Heated Air Curtain
Electrical Performance Sheet**

380/3/50 (voltage code T) MOTOR AMP DRAW PER HP													
MODEL	HEATER MBH	Temp Rise °F	Qty @ HP	# CKTS	MULTIPLE CKT - MOTOR PANEL & HEATER				SINGLE CKT - MOTOR PANEL & XFMR FOR HEATER				
					AMPS PER CIRCUIT		BREAKER RATING PER CIRCUIT		# CKTS	XFMR KVA	AMPS PER CIRCUIT (including XFMR)	BREAKER RATING PER CIRCUIT	
					MOTOR 380V CKT	HEATER 120V CKT	MOTOR 380V CKT	HEATER 120V CKT					
IDC16-1060G	1 @ 250	36	1 @ 3	2	5.9	8.0	15	15	1	1	8.5	15	
IDC16-1072G	1 @ 300	37	1 @ 3	2	5.9	11.6	15	15	1	2	11.2	15	
IDC16-1084G	1 @ 300	34	1 @ 3	2	5.9	11.6	15	15	1	2	11.2	15	
IDC16-1096G	1 @ 400	34	1 @ 5	2	7.7	13.8	20	20	1	2	13.0	20	
IDC16-1108G	2 @ 250	39	1 @ 5	3	7.7	8.0/8.0	20	15/15	1	2	13.0	20	
IDC16-1120G	2 @ 300	37	1 @ 7.5	3	9.0	11.6/11.6	20	15/15	1	3	16.9	25	
IDC16-1132G	2 @ 300	36	1 @ 7.5	3	9.0	11.6/11.6	20	15/15	1	3	16.9	25	
IDC16-1144G	2 @ 300	35	1 @ 7.5	3	9.0	11.6/11.6	20	15/15	1	3	16.9	25	
IDC16-1156G	2 @ 350	40	1 @ 7.5	3	9.0	13.8/13.8	20	20/20	1	5	22.2	30	
IDC16-2168G	2 @ 350	35	1 @ 3 1 @ 5	3	13.6	13.8/13.8	25	20/20	1	5	26.8	35	
IDC16-2180G	2 @ 400	38	1 @ 3 1 @ 5	3	13.6	13.8/13.8	25	20/20	1	5	26.8	35	
IDC16-2192G	2 @ 400	34	2 @ 5	3	15.4	13.8/13.8	25	20/20	1	5	28.6	40	

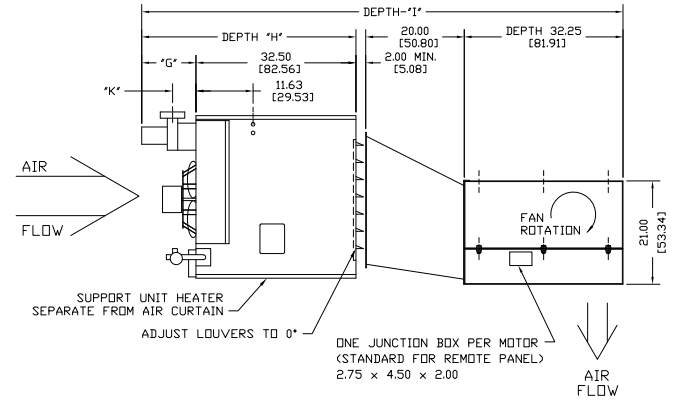
IDC16 INDIRECT GAS HEATED ONE HEATER SYSTEM



NOTES:

- ① AIR CURTAIN MUST BE INSTALLED SO AIR STREAM IS NOT OBSTRUCTED WHEN DEFLECTED 20° TO EITHER SIDE OF ϕ .
- ② ELECTRICAL CONNECTIONS TO BE FLEXIBLE.
- ③ FIELD VERIFY DIMENSIONS.
- ④ ANCHORS TO SUPPORTING STRUCTURE BY OTHERS.
- ⑤ ADEQUACY OF SUPPORTING STRUCTURE IS TO BE VERIFIED BY A PROFESSIONAL STRUCTURAL ENGINEER.
- ⑥ LETTER "G" IN MODEL NUMBER DESIGNATES, POSITIVE INDIRECT GAS HEATER UNIT.
- ⑦ STANDARD CONTROL PANEL LEFT HAND MOUNT, OPTIONAL RIGHT HAND MOUNT, OR REMOTE. PLEASE SPECIFY.
- ⑧ "XF" SERIES 300-450 MBH HEATERS HAVE TWO FANS & TWO MOUNTING POINTS.
- ⑨ SUPPLY PRESSURES HIGHER THAN 0.50 POUND REQUIRE INSTALLATION OF AN ADDITIONAL SERVICE REGULATOR EXTERNAL TO THE UNIT.
- ⑩ DIMENSIONS IN INCHES [CENTIMETERS].

END VIEW



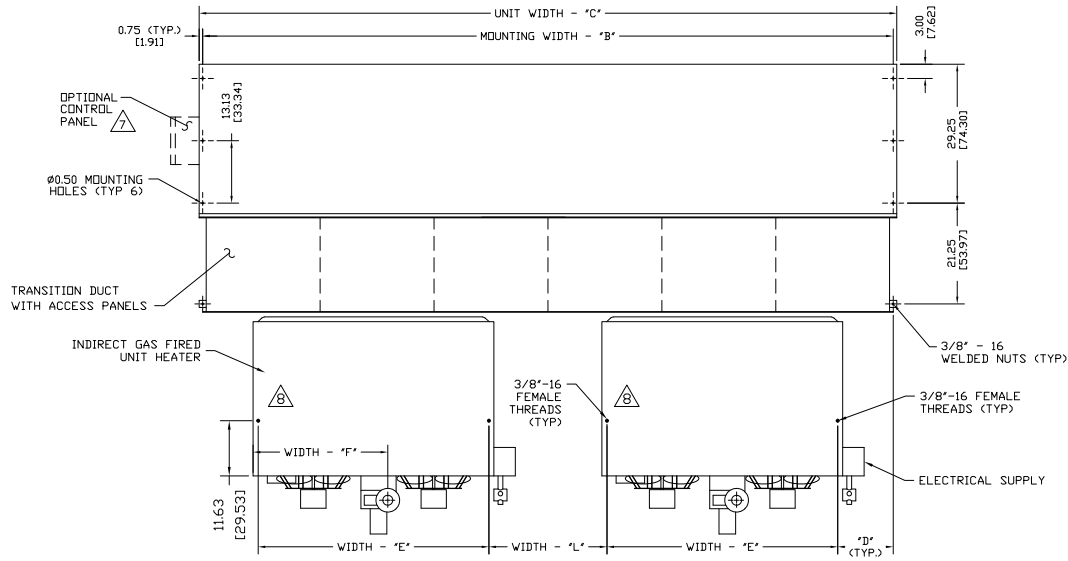
CAUTION:
HEATER IS EQUIPPED FOR A MAXIMUM GAS SUPPLY PRESSURE OF 1/2 POUND, 8 OUNCES, OR 14 INCHES WATER COLUMN.

MODEL	NOZZLE WIDTH 'A'	MOUNTING WIDTH 'B'	UNIT WIDTH 'C'	TOTAL NO. HEATER(S) @ MBTU INPUT	UNIT TO HTR. MOUNTING WIDTH 'D'	HEATER MOUNTING WIDTH 'E'	HTR. CABINET TO ϕ OF FLUE WIDTH 'F'	OVERALL FLUE DEPTH 'G'	OVERALL HEATER DEPTH 'H'	OVERALL SYSTEM DEPTH 'I'	FLUE DIAMETER 'J'	HTR. CABINET TO FLUE ϕ DEPTH 'K'	BETWEEN HTR. MOUNTING WIDTH 'L'	PROJECT	LOCATION	ARCHITECT	ENGINEER	REV.	A
														DWG. NO.	DATE	BY	REPLACES	BY	TITLE
IDC16-1060G-F	60.00 [152.40]	61.50 [156.21]	63.00 [160.02]	1 @ 250	15.44 [39.22]	30.63 [77.80]	19.38 [49.22]	11.00 [27.94]	43.50 [110.49]	97.75 [248.29]	5.00 [12.70]	4.75 [12.06]	-	IDC16-IGF1-XF					
IDC16-1072G-F	72.00 [182.88]	73.50 [186.69]	75.00 [190.50]	1 @ 300	12.44 [31.60]	48.63 [123.52]	28.38 [72.08]	12.25 [31.12]	44.75 [113.66]	99.00 [251.46]	6.00 [15.24]	5.13 [13.03]	-	06MAY2021					MODEL IDC16 AIR CURTAIN INDIRECT GAS FIRED - ONE HEATER SYSTEM
IDC16-1084G-F	84.00 [213.36]	85.50 [217.17]	87.00 [220.98]	1 @ 300	18.44 [46.85]	48.63 [123.52]	28.38 [72.08]	12.25 [31.12]	44.75 [113.66]	99.00 [251.46]	6.00 [15.24]	5.13 [13.03]	-	20FEB20					
IDC16-1096G-F	96.00 [243.84]	97.50 [247.65]	99.00 [251.46]	1 @ 400	24.44 [62.08]	48.63 [123.52]	28.38 [72.08]	12.25 [31.12]	44.75 [113.66]	99.00 [251.46]	6.00 [15.24]	5.13 [13.03]	-	A. Johnston					BERNER INTERNATIONAL CORP. NEW CASTLE, PA.

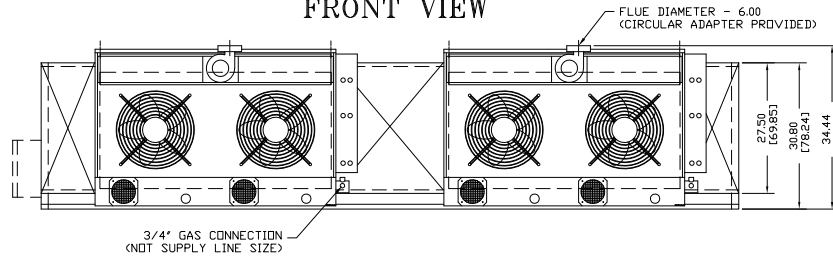
IDC 16

INDIRECT GAS HEATED TWO HEATER SYSTEM

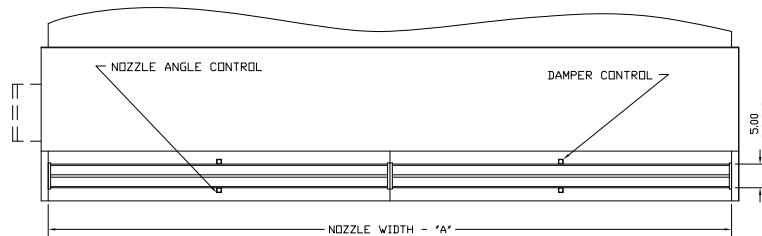
TOP VIEW



FRONT VIEW



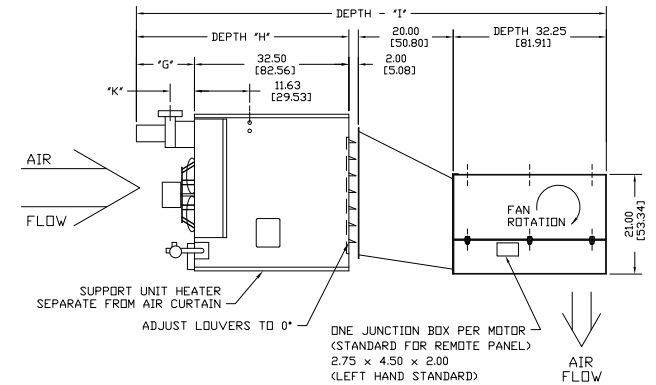
BOTTOM VIEW



NOTES:

- ⚠ AIR CURTAIN MUST BE INSTALLED SO AIR STREAM IS NOT OBSTRUCTED WHEN DEFLECTED 20° TO EITHER SIDE OF ♁.
- ⚠ ELECTRICAL CONNECTIONS TO BE FLEXIBLE.
- ⚠ FIELD VERIFY DIMENSIONS.
- ⚠ ANCHORS TO SUPPORTING STRUCTURE BY OTHERS.
- ⚠ ADEQUACY OF SUPPORTING STRUCTURE IS TO BE VERIFIED BY A PROFESSIONAL STRUCTURAL ENGINEER.
- ⚠ LETTER 'G' IN MODEL NUMBER DESIGNATES POSITIVE INDIRECT GAS HEATER UNIT.
- ⚠ STANDARD PANEL LEFT HAND MOUNT, OPTIONAL RIGHT HAND MOUNT, OR REMOTE. PLEASE SPECIFY.
- ⚠ 'XF' SERIES 300-450 MBH HEATERS HAVE TWO FANS & TWO MOUNTING POINTS.
- ⚠ SUPPLY PRESSURES HIGHER THAN 0.50 POUND REQUIRE INSTALLATION OF AN ADDITIONAL SERVICE REGULATOR EXTERNAL TO THE UNIT.
- ⚠ DIMENSIONS IN INCHES [CENTIMETERS].

END VIEW



CAUTION:

HEATER IS EQUIPPED FOR A MAXIMUM GAS SUPPLY PRESSURE OF 1/2 POUND, 8 OUNCES, OR 14 INCHES WATER COLUMN.

MODEL	NOZZLE WIDTH 'A'	MOUNTING WIDTH 'B'	UNIT WIDTH 'C'	TOTAL NO. HEATER(S) @ MBTU INPUT	UNIT TO HTR MOUNTING WIDTH 'D'	HEATER MOUNTING WIDTH 'E'	HTR. CABINET TO C. OF FLUE WIDTH 'F'	OVERALL FLUE DEPTH 'G'	OVERALL HEATER DEPTH 'H'	OVERALL SYSTEM DEPTH 'I'	FLUE DIAMETER 'J'	HTR. CABINET TO FLUE C. DEPTH 'K'	BETWEEN HTR. MOUNTING WIDTH 'L'	PROJECT	LOCATION				
														ARCHITECT	ENGINEER	REV.	B		
IDC16-1108G-F	108.00 [274.32]	109.50 [278.13]	111.00 [281.94]	2 @ 250	12.44 [31.60]	30.63 [77.80]	19.38 [49.23]	11.00 [27.94]	43.50 [110.49]	97.75 [248.29]	5.00 [12.70]	4.75 [12.06]	23.38 [59.38]						
IDC16-1120G-F	117.00 [297.18]	118.50 [300.99]	120.00 [304.80]	2 @ 300	5.69 [14.45]	48.63 [123.52]	28.38 [72.08]	12.25 [31.12]	44.75 [113.66]	99.00 [251.46]	6.00 [15.24]	5.13 [13.03]	9.88 [25.09]						
IDC16-1132G-F	132.00 [335.28]	133.50 [339.09]	135.00 [342.90]	2 @ 300	9.44 [23.98]	48.63 [123.52]	28.38 [72.08]	12.25 [31.12]	44.75 [113.66]	99.00 [251.46]	6.00 [15.24]	5.13 [13.03]	17.38 [44.14]						
IDC16-1144G-F	144.00 [365.76]	145.50 [369.57]	147.00 [373.38]	2 @ 300	12.44 [31.60]	48.63 [123.52]	28.38 [72.08]	12.25 [31.12]	44.75 [113.66]	99.00 [251.46]	6.00 [15.24]	5.13 [13.03]	23.38 [59.38]						
IDC16-1156G-F	156.00 [396.24]	157.50 [400.05]	159.00 [403.86]	2 @ 350	15.44 [39.22]	48.63 [123.52]	28.38 [72.08]	12.25 [31.12]	44.75 [113.66]	99.00 [251.46]	6.00 [15.24]	5.13 [13.03]	29.38 [74.62]						
IDC16-2168G-F	168.00 [426.72]	169.50 [430.53]	171.00 [434.34]	2 @ 350	18.44 [46.84]	48.63 [123.52]	28.38 [72.08]	12.25 [31.12]	44.75 [113.66]	99.00 [251.46]	6.00 [15.24]	5.13 [13.03]	35.38 [89.86]						
IDC16-2180G-F	180.00 [457.20]	181.50 [461.01]	183.00 [464.82]	2 @ 400	21.44 [54.46]	48.63 [123.52]	28.38 [72.08]	12.25 [31.12]	44.75 [113.66]	99.00 [251.46]	6.00 [15.24]	5.13 [13.03]	41.38 [105.10]						
IDC16-2192G-F	192.00 [487.68]	193.50 [491.49]	195.00 [495.30]	2 @ 400	24.44 [62.08]	48.63 [123.52]	28.38 [72.08]	12.25 [31.12]	44.75 [113.66]	99.00 [251.46]	6.00 [15.24]	5.13 [13.03]	47.38 [120.34]						
														DWG. NO.	IDC16-1GF2-XF	TITLE:	BERNER		
														DATE	06MAY2021	BY	S. Bell		
														REPLACES	29JAN2020	BY	A. Johnston		
														BERNER INTERNATIONAL CORP. NEW CASTLE, PA.					