

Tested in accordance with ISO27327-1 in an accredited A2LA laboratory, not AMCA Certified.

Energy Codes ASHRAE 90.1-2019, IECC 2018, and ASHRAE 189.1 vestibule exception validated by AMCA certification.



Berner International certifies that the air curtains shown here-in are licensed to bear the AMCA Seal. The ratings shown are based on tests and procedures performed in accordance with AMCA Publication 211 and comply with the requirements of the AMCA Certified Ratings Program. Rated data shown is for base (hot water heated) units. The AMCA Certified Ratings Seal applies to airflow rate, average outlet velocity, outlet velocity uniformity, velocity projection and power rating at free delivery only.

5 Year Limited Warranty



indoor use



MODEL	Nozzle Width (mm)	Max Vel. at Nozzle (m/s)	Avg. Outlet Vel. (m/s)	Air Volume (m <sup>3</sup> /hr)	Outlet Vel. Uniformity	Power Rating (kW)	Total Motor (kW)	Total EC Motor Amperage (A)	Water Coil Output (kW)	Entering/Leaving Water Temp (°C)	Water Flow Rate (l/s)	Fluid Pressure Drop (kPa)	Air Temp. Rise (°C)	Net Wt. (kg)
AI08-F-1036W	914	10,4	7,8	1476	84%	0,19	0,15	2,50	5,1	60	55	0,3	4,0	31
AI08-F-1042W	1067	10,1	7,9	1724	82%	0,20	0,15	2,50	6,2	60	55	0,3	6,4	34
AI08-F-1048W	1219	10,2	8,1	2020	80%	0,23	0,15	2,50	7,1	60	55	0,3	6,5	38
AI08-F-1060W	1499	10,4	7,9	2431	80%	0,26	0,15	2,50	8,6	60	53	0,3	6,8	45
AI08-F-1072W	1829	9,8	7,1	2664	83%	0,28	0,15	2,50	10,5	60	54	0,4	13,7	53
AI08-F-2078W	1981	10,4	7,9	3201	82%	0,39	0,30	5,00	11,8	60	53	0,4	13,9	62
AI08-F-2084W	2134	10,1	7,9	3449	82%	0,41	0,30	5,00	12,7	60	53	0,4	14,2	68
AI08-F-2096W	2438	10,2	8,1	4040	80%	0,46	0,30	5,00	15,2	60	54	0,6	23,9	74
AI08-F-2108W	2743	10,4	7,9	4451	80%	0,49	0,30	5,00	16,8	60	53	0,6	24,7	82
AI08-F-2120W	2997	10,4	7,9	4863	80%	0,53	0,30	5,00	18,5	60	53	0,6	31,1	88

**NOTES:**

- Standard connection same end supply/return.
- Coil should be field supplied with a solenoid/control valve that energizes only when air curtain is energized. Consideration must be taken for freeze protection when necessary.
- Coil performance based on 18°C entering air temperature.
- Maximum leaving air temperature shall not exceed 49°C.
- Consult factory for alternate entering air & water temperatures or Volumetric Flow Rate.

### MODEL NUMBER CONFIGURATION

**AI08-E-1 036 W V-EC-CB-D-R-SS**

Series	Version	# of Motors	Opening Width	Heat	Voltage	Motor Type	Berner AIR	Opt. Data Link	Opt. Display	Opt. Cabinet Finish
AI08	E	1, 2	036" - 120" (914- 3048mm)	W=Hot Water Heated	EC motors only V = 230/1/50	EC= Motor	CB=BASIC (Std.) CM=BMS	D=Physical Interconnect (daisy chain)	R=Remote Display TB=Tablet	SS=Stainless Steel CC=Custom Color

for Standard offering, leave options (Opt.) blank

**STANDARD CONSTRUCTION**

- 210mm high x 406mm deep
- EC motor(s) - ten speeds
- Touchscreen interface with Intelliswitch™ digital controller, includes Berner AIR® BASIC (smart control)
- Clear satin anodized aluminum exterior
- Wall or Top Mounting
- High efficiency, low noise, articulating, three vane, Pro-V Nozzle
- Factory installed coil
- Filter (washable)

**OPTIONS**

- Custom Color or Stainless
- Rear cover for top mounting to conceal fasteners

VELOCITY PROJECTION: Model AI08-F-1036A			
Distance from Nozzle (mm)	1000	2000	3000
Core Velocity (m/s)	4,4	3,9	2,9
Uniformity (%)	90%	88%	87%

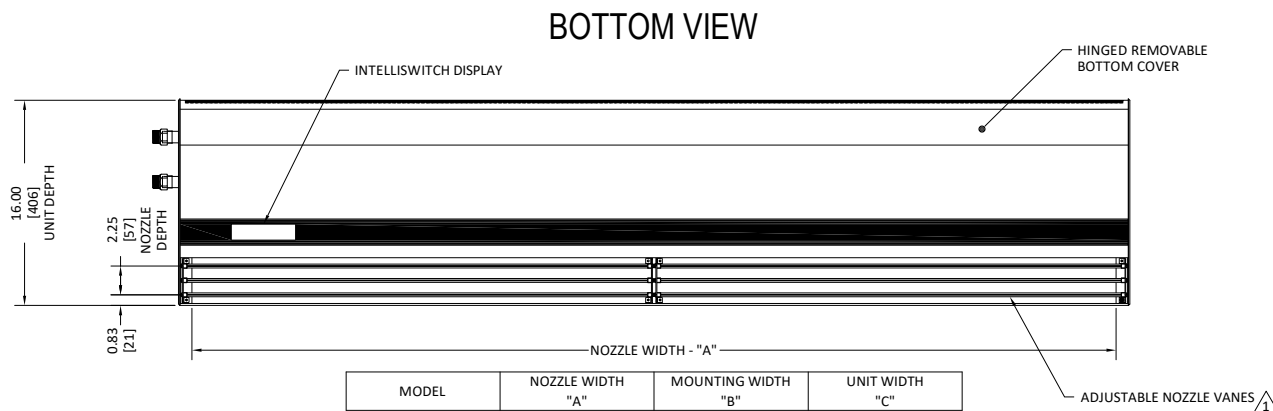
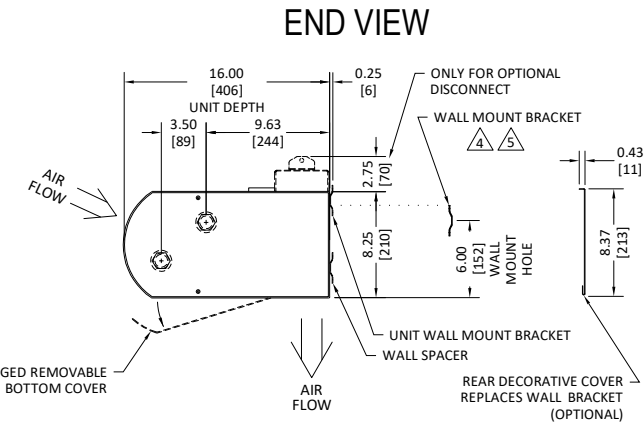
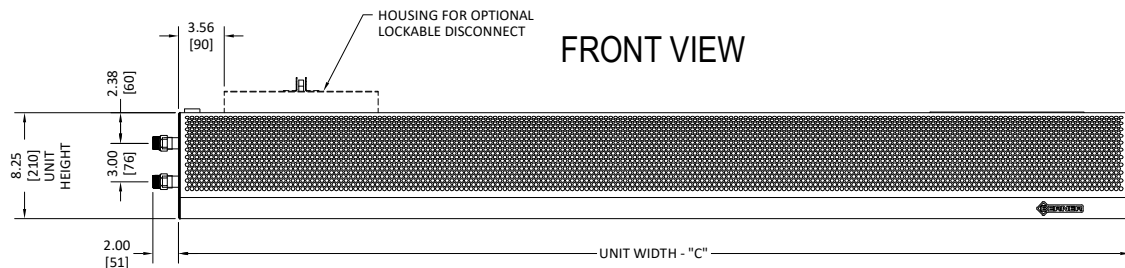
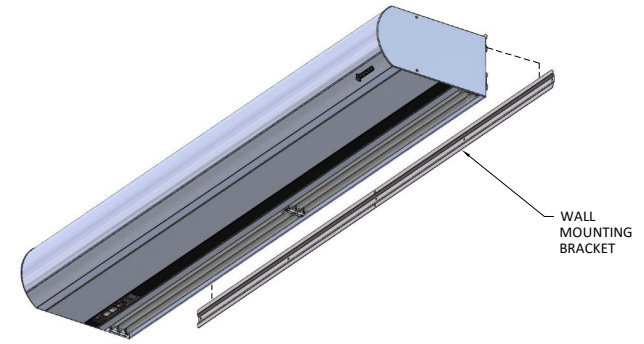
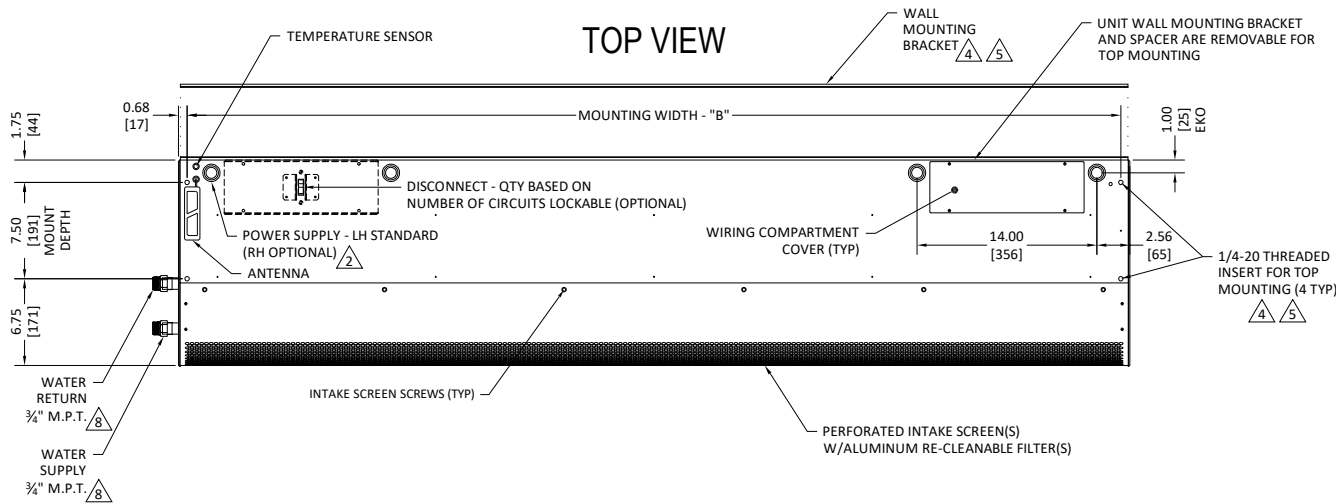
ASHRAE 90.1-2019 vestibule exception requires, "a jet velocity of not less than 6.6 feet per second (400 fpm; 2.0 m/s) at 6.0 in (15 cm) above the floor."

Sound level measured 10' (3m) from the unit in free field:  
 1 motor: Min./Max. Speed: 50/55 dBA  
 2 motors: Min./Max. Speed: 53/58 dBA

Sound data is not AMCA certified.

Berner reserves the right to alter specifications without prior notice.

# AI08-F WATER HEATED SYSTEM: 120 - 277V



MODEL	NOZZLE WIDTH "A"	MOUNTING WIDTH "B"	UNIT WIDTH "C"
AI08-F-1036W	36.00 [914]	36.75 [934]	38.13 [968]
AI08-F-1042W	42.00 [1067]	42.75 [1086]	44.13 [1121]
AI08-F-1048W	48.00 [1219]	48.75 [1238]	50.13 [1273]
AI08-F-1060W	59.00 [1499]	59.75 [1518]	61.13 [1553]
AI08-F-1072W	72.00 [1829]	72.75 [1848]	74.13 [1883]
AI08-F-1078W	78.00 [1981]	78.75 [2000]	80.13 [2035]
AI08-F-2084W	84.00 [2134]	84.75 [2153]	86.13 [2188]
AI08-F-2096W	96.00 [2438]	96.75 [2458]	98.13 [2492]
AI08-F-2108W	108.00 [2743]	108.75 [2762]	110.13 [2797]
AI08-F-2120W	118.00 [2997]	118.75 [3016]	120.13 [3051]

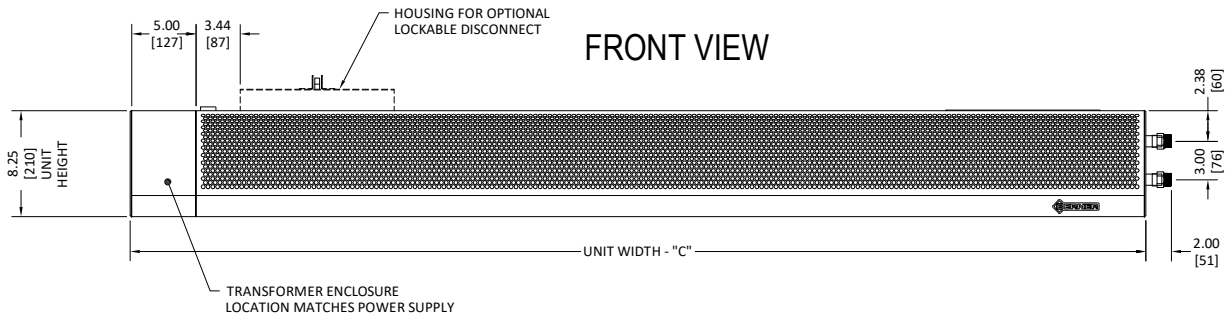
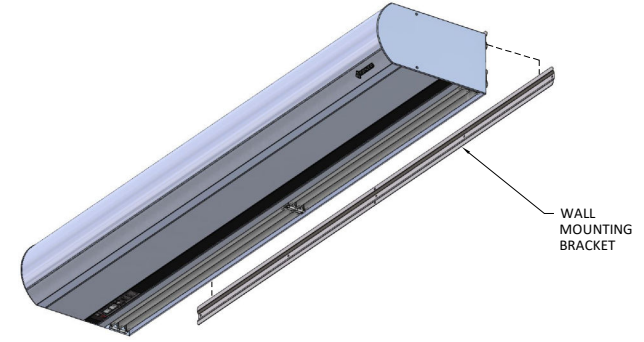
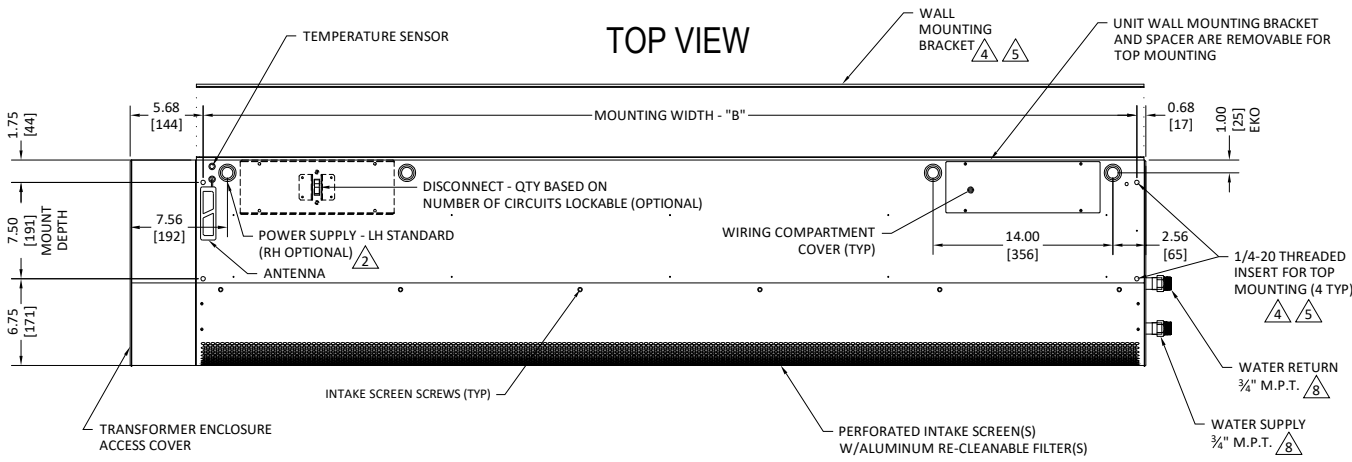
## NOTES:

- 1 AIR CURTAIN MUST BE INSTALLED SO AIR STREAM IS NOT OBSTRUCTED WHEN DEFLECTED 20° TO EITHER SIDE OF C.
- 2 ELECTRICAL CONNECTIONS TO BE FLEXIBLE.
- 3 FIELD VERIFY DIMENSIONS.
- 4 ANCHORS TO SUPPORTING STRUCTURE BY OTHERS.
- 5 ADEQUACY OF SUPPORTING STRUCTURE IS TO BE VERIFIED BY A PROFESSIONAL STRUCTURAL ENGINEER.
- 6 THE LAST CHARACTER IN THE MODEL NUMBER - "W" DESIGNATES WATER HEATED UNIT.
- 7 DIMENSIONS IN INCHES [MILLIMETERS].
- 8 COIL CONNECTIONS LH STANDARD (AS SHOWN), OPTIONAL RH.

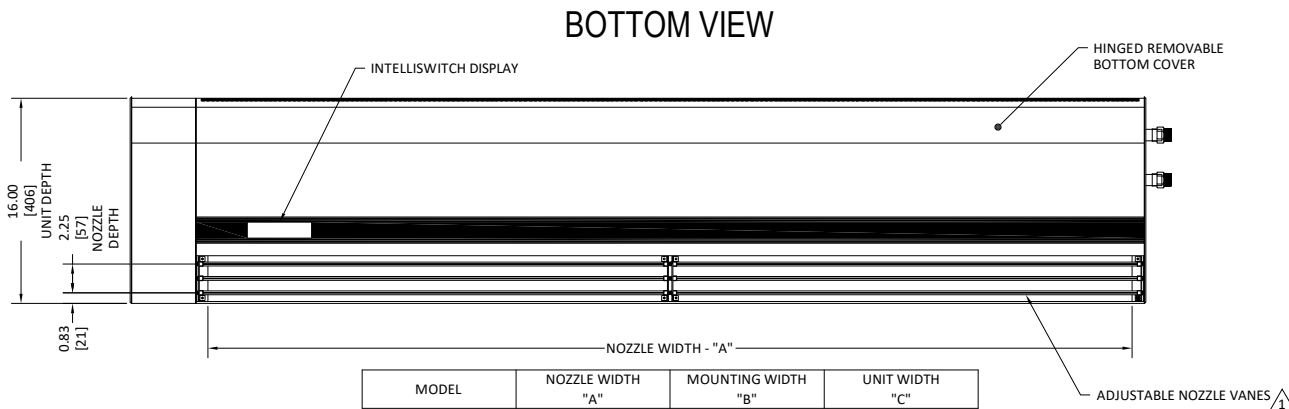
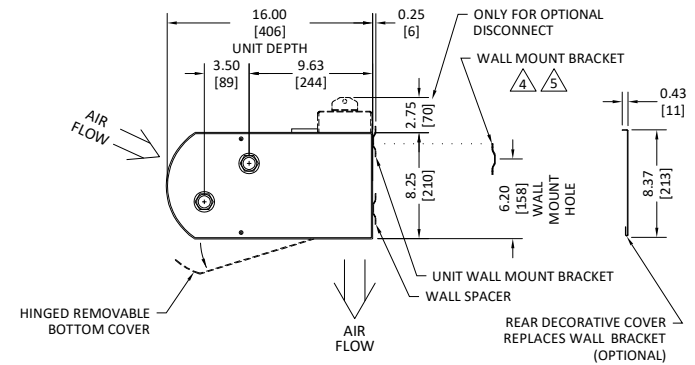
SHEET 1 OF 1

PROJECT		REV	0
LOCATION			
ARCHITECT			
ENGINEER			
DWG. NO.	AI08-F-WTR-120	TITLE:	<b>BERNER</b> MODEL AI08-F AIR CURTAIN 120 - 277V WATER HEATED SYSTEM
DATE	23JAN2025		
BY	S. Beil		
REPLACES	10JUL2023		
BY	D.Johnson		BERNER INTERNATIONAL CORP. NEW CASTLE, PA.

# A108-F WATER HEATED SYSTEM: 277 - 600V



END VIEW



## NOTES:

- 1 AIR CURTAIN MUST BE INSTALLED SO AIR STREAM IS NOT OBSTRUCTED WHEN DEFLECTED 20° TO EITHER SIDE OF C.
- 2 ELECTRICAL CONNECTIONS TO BE FLEXIBLE.
- 3 FIELD VERIFY DIMENSIONS.
- 4 ANCHORS TO SUPPORTING STRUCTURE BY OTHERS.
- 5 ADEQUACY OF SUPPORTING STRUCTURE IS TO BE VERIFIED BY A PROFESSIONAL STRUCTURAL ENGINEER.
- 6 THE LAST CHARACTER IN THE MODEL NUMBER - "W" DESIGNATES WATER HEATED UNIT.
- 7 DIMENSIONS IN INCHES [MILLIMETERS].
- 8 COIL CONNECTIONS OPPOSITE POWER SUPPLY, RH SHOWN, OPTIONAL LH.

MODEL	NOZZLE WIDTH "A"	MOUNTING WIDTH "B"	UNIT WIDTH "C"
A108-F-1036W	36.00 [914]	36.75 [934]	38.13 [968]
A108-F-1042W	42.00 [1067]	42.75 [1086]	44.13 [1121]
A108-F-1048W	48.00 [1219]	48.75 [1238]	50.13 [1273]
A108-F-1060W	59.00 [1499]	59.75 [1518]	61.13 [1553]
A108-F-1072W	72.00 [1829]	72.75 [1848]	74.13 [1883]
A108-F-1078W	78.00 [1981]	78.75 [2000]	80.13 [2035]
A108-F-2084W	84.00 [2134]	84.75 [2153]	86.13 [2188]
A108-F-2096W	96.00 [2438]	96.75 [2458]	98.13 [2492]
A108-F-2108W	108.00 [2743]	108.75 [2762]	110.13 [2797]
A108-F-2120W	118.00 [2997]	118.75 [3016]	120.13 [3051]

SHEET 1 OF 1

PROJECT		REV	0
LOCATION			
ARCHITECT			
ENGINEER			
DWG. NO.	A108-F-WTR-600	TITLE:	<b>BERNER</b> MODEL A108-F AIR CURTAIN 600V WATER HEATED SYSTEM
DATE	23JAN2025		
BY	S. Beil		
REPLACES	10JUL2023		
BY	D.Johnson	BERNER INTERNATIONAL CORP. NEW CASTLE, PA.	